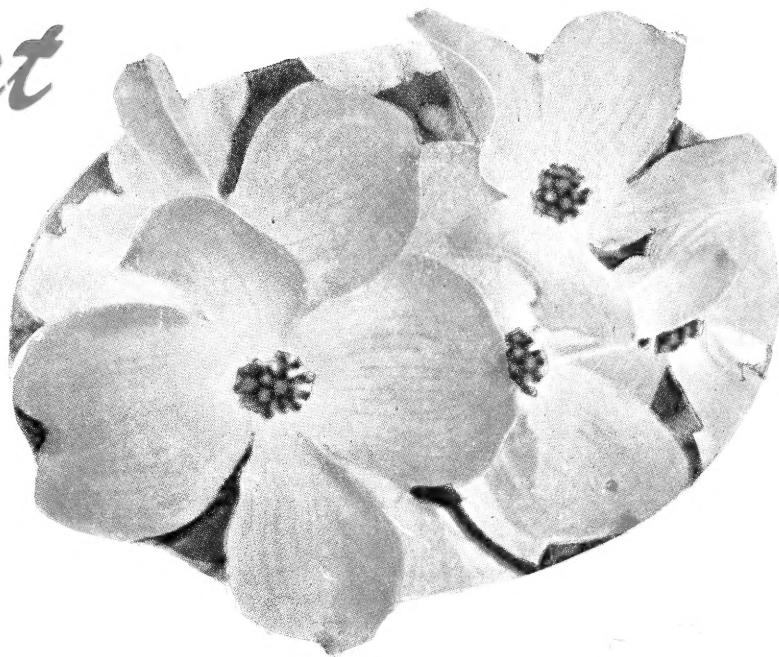


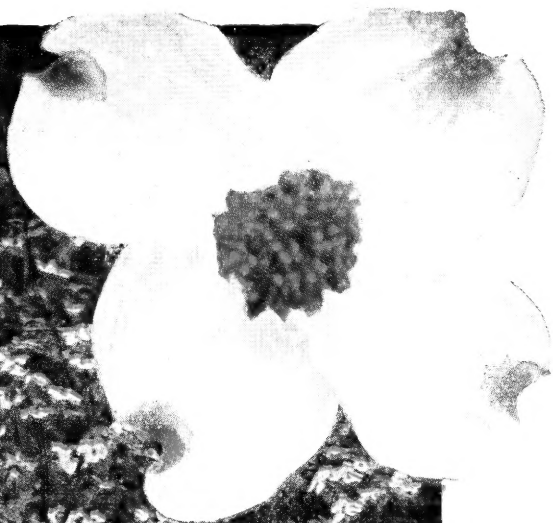
RSB115  
29B35

# W • WHEN • WHERE and

# What to Plant



**CORNUS FLORIDA RUBRA (Red Dogwood)**  
*See page 21*



**CORNUS FLORIDA (White Dogwood)**  
*See page 21*



**JAPANESE CHERRY, KWANZAN**  
*See page 23*

LIBRARY  
RECEIVED  
★ MAR 12 1957  
U. S. Department of Agriculture

# Barr's

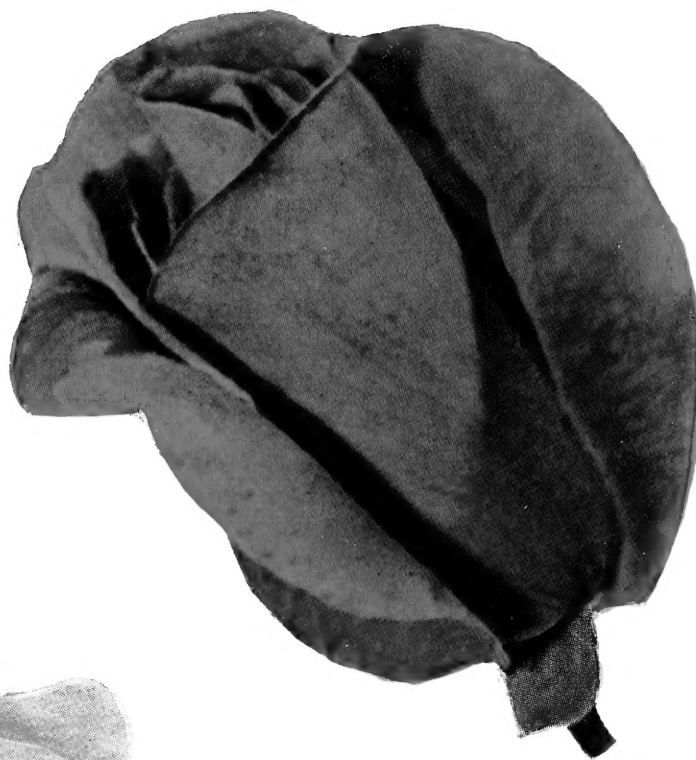
1893—1957  
64 YEARS

**B. F. BARR & SON**  
NURSERIES: 1725 MARIETTA AVE., ROUTE 340  
LANCASTER, PA.



**PRES. HERBERT HOOVER**

\$1.50 each;  
3 or more, \$1.30 each



**NOCTURNE**

*Plant Pat. No. 713*

\$2.25 each; 3 or more, \$2.00 each

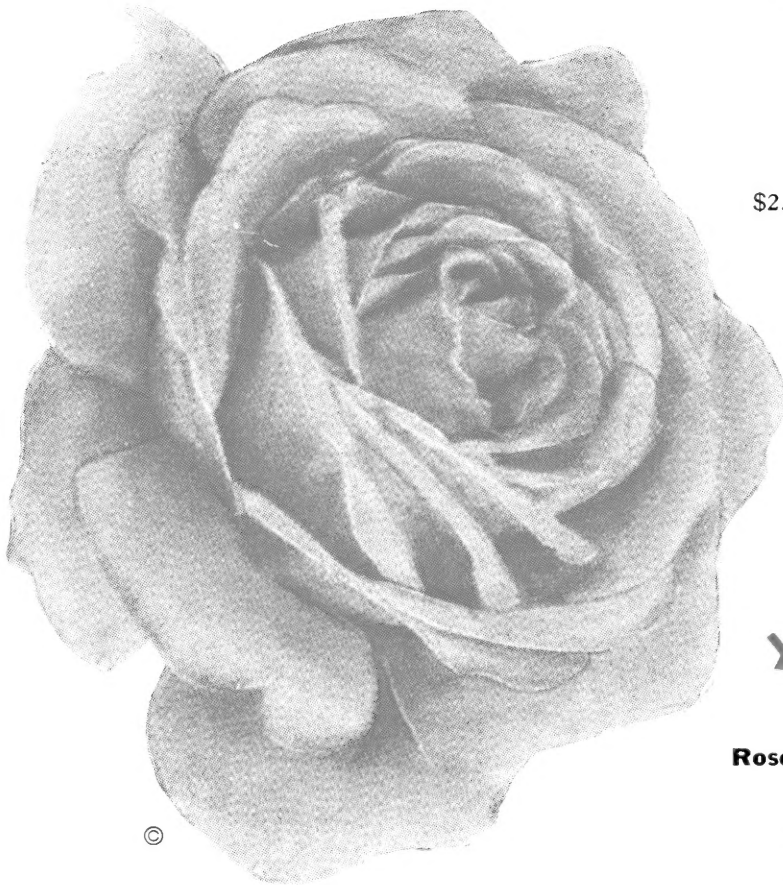
ONE EACH  
OF THESE

**5**

*Fine Roses*

**\$9.25**

postpaid



**5**  
*Beautiful*

**ROSES**  
for  
**YOUR GARDEN**

**Roses described on pages 3, 4, 5, 6, 7**

©

**PEACE**

*Plant Pat. No. 591*

\$2.50 each; 3 or more, \$2.20 each



**GOOD NEWS**

*Plant Pat. No. 426*

\$2.00 each;  
3 or more, \$1.75 each

**PRESIDENT EISENHOWER**

*Plant Pat. No. 1217*

\$2.25 each; 3 or more, \$2.00 each



# Top Size Bulbs for Summer Flowers

All Bulbs on this page are sent prepaid Parcel Post with complete planting instructions.

## Vaughan's DeLuxe-Flowered Gladiolus

Gladiolus make attractive displays in the garden when planted in beds or in groups along the border, and they are ideal for cutting. Gladiolus are easily grown in any good, well-drained soil in a sunny location. They may be had in bloom continuously through the summer and fall months by planting a number of bulbs every week or so from early spring until July. Free from Thrips and other diseases.

The following are truly superb and proven varieties, which are extra fine in color and bear immense flowers, excellently placed on tall, upright spikes.

### FINE AND NEW SELECT VARIETIES

## Gladiolus

Elizabeth The Queen. Fine ruffled lavender.

General Eisenhower. Begonia rose.

Hopman's Glory. Yellow.

Joe Wagenaar. Dark red.

Palet. Vermilion with large lavender purple blotch.

Snow Princess. A very fine white.

Large 1½"-2" Size Bulbs.

10 Bulbs of any one variety, 80c.

5 Bulbs each of the above 6 varieties, 30 Bulbs in all, only \$2.20.

### GIANT-FLOWERED

## Tuberous Rooted Begonias

Imported from Belgium

Double Camelia Flowering

Begonias are perhaps the handsomest of all summer-flowering plants. They are very popular for planting in beds or groups in moist, shaded areas. They thrive best in soil containing 50% leaf mold. They bloom from July until frost.

Brilliant, full double, giant flowers which resemble camellias.

Copper	White	Orange	Pink
Scarlet	Salmon	Yellow	Crimson

Large 1½"-2" Size Bulbs.

Mixed colors, 5 for 90c; 25 for \$4.00. Potted Plants in May at 60c each.

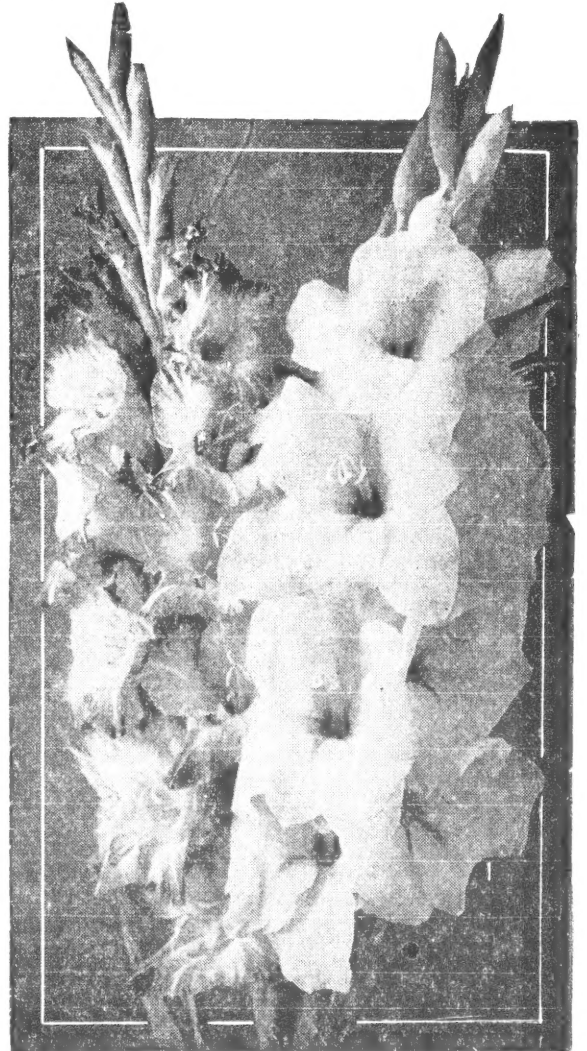
## Gloxinia

They can be planted from February until late May for a succession of bloom. Place one bulb in a 5-inch pot filled with good rich sandy loam, water sparingly and place at once in a sunny window or conservatory.

Large 1½"-2" Size Bulbs

Vaughan's Finest Mixed Colors

3 for \$1.10; 10 for \$3.00. Potted Plants in May at 75c ea.



Plant GLADIOLUS for Summer Bloom.

### VAUGHAN'S FANCY-LEAVED

## Caladiums

Showy foliage plants with variegated leaves. Marvelous pot plants that do well in shady window boxes or in outdoor beds in semi-shady positions.

If cut and put in bowls or vases, the leaves make most effective and attractive table decorations.

Best if started in pots, one bulb to a 6-inch pot.

Vaughan's Choice Mixture. 1½"-2" diameter.

Caladium candidum. White with green veins.

35c ea.; 10 for \$3.20; 25 for \$7.50.

# FERTILIZERS AND INSECTICIDES (See also Page 33)

- End-O-Pest Garden Spray.** All-purpose garden insecticide containing 50% Malathion. 2 oz. bottle, 70c; 6 oz. bottle, \$1.50.
- End-O-Pest Rose Dust.** Controls all rose insects and red spiders as well as black spot and mildew. Ideal protection for all ornamental plants. 10 oz. applicator gun, \$1.49; 3 lb. canister refill, \$3.77.
- End-O-Pest Tree Spray.** Controls chewing, sucking insects, red spider, and most fungus diseases on fruit and shade trees, and evergreens. 1 lb. canister, \$1.75.
- End-O-Weed Crab Grass Killer.** Excellent control for crabgrass and chickweed. Easy and economical to use. Won't harm grass if used as directed. 7 oz. can, 98c.
- End-O-Weed 2, 4-D Lawn Weed Killer.** Kills over 100 different types of broadleaf weeds. Kills such "tough to control" weeds such as dandelion, plantain, ragweed, garlic, etc. ½ pint can, 98c; 1 quart can, \$2.75.
- G&O Go-Crab Grass Killer.** Excellent results are obtained on mature and seedling crabgrass and chickweed. Can be applied with hand sprayer or sprinkling can. 4 oz. can, \$1.25.
- G&O Rabbit Repellent.** Safe to use on plants; rats don't like it and rains do not affect it. 1 lb. bag, 50c.
- G&O Weed and Poison Ivy Killer.** Kills such weeds as crabgrass, briars, thistle, honeysuckle, Carrot & Morning Glory, Wire grass, ragweed, and Poison Ivy. Use as directed. 1 quart, 85c.
- Hollytone.** Excellent for Holly, Azaleas, Rhododendrons, Dogwoods, and Hemlocks. 5 lbs., 80c.
- Hyponex Plant Food.** Water soluble and balanced plant food for all house plants, garden flowers, vegetables, and shrubs. 3 oz. can, 25c.
- Isotox Garden Spray.** Gives excellent control over practically every garden insect. Combine with Orthorix spray to control insects and diseases. 8 oz. bottle, \$1.85.
- Orthorix Spray.** Controls diseases on roses, and many fruits and ornamentals. Combine with Isotox Spray for control on insects and diseases in the garden. 4 oz. bottle, 50c.
- Ortho Rose Dust.** A fine multi-purpose rose and flower garden dust or wettable powder for the control of insects and diseases. 8 oz. duster, \$1.00; 1 lb. canister refill, \$1.25.
- Scram Dog Repellent.** A powder in applicator to keep dogs from shrubs, lawns, and porches. Safe to animals or children. 8 oz. canister, 59c.
- Viol-Ogen Plant Food.** Quick soluble African Violet plant food and stimulant. 3 oz. can .50.

## ADDITIONAL GARDEN ACCESSORIES

- Don's Dandy Digger.** A new and easy way to plant bulbs, vegetables, or bedding plants. No more aching back or sore knees. Write for literature. \$2.98 each.
- Hole-In-One Planting Tool.** A handy hand tool for planting bulbs, and potted plants. \$1.00 each.
- Liquid Sticker Spreader.** Contains wilt-pruf. Makes pesticides last longer and prevents transplant loss. 1 pint, 75c.
- Ortho Spray-ette.** A garden hose sprayer that sprays 1½ gallons. Simply add insecticide to jar as directed, fill with water, attach to garden hose, turn on water and you are ready to spray. Sprayer, \$2.95.
- Ross Root Feeder.** Place food cartridge in chamber, attach feeder to garden hose, push feeder into ground, turn on water and you water, feed, and aerate at the roots where it is needed. Ross Root Feeder and one free box of food cartridges, \$4.98. Acid, Neutral, and Starter boxes of cartridges, \$1.00 each.
- Terra-Lite.** A fine material for conditioning soil, plant propagation, storing bulbs, and floral arrangements. ¾ lb. bag, 39c. 3 lb. bag, 89c.
- Treekote.** A pruning and grafting compound. Ready to apply as it comes from the can. 1 pint can, 59c.

POSTAGE—NOT PREPAID



For easiest application of ORTHO-GRO Liquid plant food and lawn sprays. You can fertilize everything properly, without danger of burning plants, shrubs, trees or lawns from over-dosage. Pour ORTHO-GRO or Lawn Sprays in your lawn sprayer and attach to hose. Correct dilution is automatic at any water pressure.

Sprayer and bottle of Liquid Fertilizer ----- \$3.95  
 Refills ----- 90c

Add Postage—Not Prepaid



Have Every Feature You Want in a Garden Glove

All-Leather—DIRT PROOF—Durable  
 SOFT — Comfortable — WASHABLE

*Easy on the hands and easy to wear!*

Economical, too—outwear 6 pairs of ordinary fabric gloves, are washable and can be used the year round for garden, housework, yard, painting, furnace, garage, etc. You'll like them.

Sizes for Women (small, medium, large) for Men (small, medium, large).

Women's sizes ----- \$1.59 pr.  
 Men's sizes ----- \$1.59 pr.

Add Postage—Not Prepaid

# Barr's Gift Certificate

A Living Plant is always appreciated

Remember your friends with a growing Tree, Rose Plants, Evergreens or other plants, for Anniversaries, Easter Gifts, Christmas, Birthdays and other occasions. Gift Certificate can be written for plants, your selection or for dollar value in merchandise, the recipients making their own selection from our catalog.

We will send the Gift Certificate to the Recipient, (or to you, the donor, if you prefer), so as to arrive on the date desired, and fill the order at once, or at a seasonable time to plant in the garden or lawn.

If shipping is required please refer to terms of sale on page 34.

## TO OUR PATRONS AND FRIENDS

In presenting our catalogue for the 64th. year, we wish to express our thanks and appreciation to our many friends and patrons for their generous patronage which we have enjoyed in the past, and to assure you that we will use our every effort to merit the continuance of your good will and orders this year, and the years to come.

You will find we featured in this catalog newer and improved varieties of plants for a complete landscape planting—Evergreens, Roses, Chrysanthemums, Perennials, Shrubbery and Shade Trees and Lawn Seed; garden accessories, fertilizers, and insecticides.

The best cultured fresh dug plants obtainable, practically all of our own growing that will produce outstanding results wherever they are planted.

See index, and sales conditions, Page 34.

Yours for better quality,  
B. F. BARR & SON

### THE NEWER AND BETTER TRIED HYBRID TEA ROSES

Top Size 2 Year—Finest Rose Plants  
Guaranteed to Bloom or Money Refunded

You will have the fullest degree of pleasure in planting any of the varieties listed, for Barr's "Will Grow" Roses are guaranteed to grow and to bloom the first season, or will be replaced free. Full planting and cultural directions furnished with each order.

ORDER EARLY to receive your plants in time to plant at the earliest date your soil is in condition to set them out. We pre-pay parcel post on orders for dormant plants amounting to \$5.00 or more. Under \$5.00 please add 35c for packing and postage.

Catalogue Prices listed on the following 5 pages are for Dormant Rose Plants only, not Potted.

#### POTTED ROSES

On and after May first we offer Rose Plants established in pots, in leaf and bud. It is then usually too late to plant dormant plants.

For Potted Rose Plants, please add 30c each to catalog prices. Beyond local delivery shipping charges not prepaid.

#### QUANTITY DISCOUNT

Three rate applies to any 3 or more plants, your selection in both potted and dormant roses.

**BLANCHE MALLERIN.** Pat. 594. A beautiful white rose with a satiny sheen on the petal surface. Long, well-formed buds to 4 inches across when open; pure snowy white.

\$2.25 each; 3 or more \$2.00 each

**CAPISTRANO.** Plant Patent Applied For. The color is a rich, clear rose-pink that really lasts; tight buds are a little deeper pink approaching a bright cherry red. The glowing rose-pink color remains rich and unfaded.

\$2.00 each; 3 or more \$1.75 each

**CHARLOTTE ARMSTRONG.** Pat. 455. Blood-red pointed buds; magnificent long-stemmed, open flower, cerise in summer heat; richly fragrant. Very prolific and a continuous bloomer. Disease-resistant foliage. An All-American Rose.

\$2.25 each; 3 or more \$2.00 each



CHRYSLER IMPERIAL

**CHRYSLER IMPERIAL.** Pat. 1167. The newest Hybrid Tea to win the All-American 1953 award. Long, tapered buds and very large blooms of exhibition form. Vivid crimson with deeper overtones. A glorious new Rose of compact, sturdy habit.

\$2.50 each; 3 or more \$2.20 each

**CONFIDENCE.** Pat. 1192. Richly fragrant. Peach-toned pastel rose. Its yellow, white, and peach-pink colors melt into each other. Long 2-3" buds containing 28-38 petals with full bloom 5-6" across. Strong, upright plants.

\$2.25 each; 3 or more \$2.00 each

**COUNTESS VANDAL.** Copper and salmon, suffused with soft yellow. Long-pointed buds; full, fragrant flowers. Vigorous, upright plant; blooms unceasingly. A superb Rose for Cutting.

\$1.50 each; 3 or more \$1.30 each

**CRIMSON GLORY.** Pat. Exp. Large urn-shaped buds opening into well-formed flowers of intense deep vivid crimson, shaded oxblood-red; soft, velvet nap.

\$1.75 each; 3 or more \$1.55 each

**DR. DEBAT.** Pat. 961. A handsome, new big pink rose that is a Queen of the Show type. Large, long, formed buds, high-centered opening to 5 to 6 inch blooms. About 30 petals.

\$2.25 each; 3 or more \$2.00 each

**ECLIPSE.** Pat. Exp. International sensation; awarded prizes in Rome, Paris, etc. Long streamlined buds are rich gold without shading. Strong upright plant with healthy dark green foliage. Gold Medal winner.

\$1.75 each; 3 or more \$1.55 each

**FORTY-NINER.** Patent No. 792. Brilliantly hued bi-color that justly secured an A.A.R.S. Award for 1949. Inside of petals is a vivid Orient-Red, while the outside is a Chrome-Yellow. The long bud opens to a well shaped bloom of 25 to 40 petals; mildly fragrant.

\$2.25 each; 3 or more \$2.00 each

**GOLDEN ANNIVERSARY.** Pat. 806. A sport of Good News, with flowers as handsomely formed but a fine old-gold color, flushed apricot at times. Best of all, it is a golden Rose on a truly vigorous, well-branched plant with dense foliage right down to the ground.

\$1.75 each; 3 or more \$1.55 each

**GOLDEN MASTERPIECE.** Pat. 1284. Largest Yellow Rose in existence! Majestic, high-centered 6-7" flowers of rich golden yellow with a pleasant old Rose fragrance and glossy green foliage. Constantly repeating blooms on long stems.

\$2.75 each; 3 or more \$2.40 each

**GOLDEN SCEPTER.** Pat. 910. Golden unfading yellow buds, which slowly unfurl into large exquisite blooms. High-centered, 5½ inch flowers and tall, vigorous grower.

\$2.00 each; 3 or more \$1.75 each

**GOOD NEWS.** Pat. 426. Peach-pink, changing to silvery pink. Full, perfectly formed, tea-scented flowers. Bushy, strong grower; constant bloomer. A great door-yard Rose, 60 petals.

\$2.00 each; 3 or more \$1.75 each

**HELEN TRAUBEL.** Pat. 1028. Newest All-American award winner for 1952. Blooms 5 to 6 inches across, with 20 to 25 petals, becoming flat and spreading. Pink with outer petals approaching white. Leathery, dull foliage. Tall and vigorous.

\$2.50 each; 3 or more \$2.20 each

**KAISERIN AUGUSTE VIKTORIA.** Creamy white, large blooms on long stems; fragrant; constant, majestic bloomer.

\$1.50 each; 3 or more \$1.30 each

**KATHERINE T. MARSHALL.** Pat. 607. A large shapely rose with warm pink petals each with a golden glow at the base. Erect-growing; hardy; and fragrant.

\$1.75 each; 3 or more \$1.55 each

**LOVE SONG.** Pat. 1360. First American-bred offspring of Peace. Radiant, rich salmon-pink, with brilliant yellow reverse. Sturdy, well-foliaged with 35-55 petals. Sweetly fragrant.

\$2.50 each; 3 or more \$2.20 each

**LOWELL THOMAS.** Pat. 595. Glowing flowers of Lemon-chrome with a light tea fragrance. Strong, upright plants with lustrous foliage, 25 petals.

\$2.25 each; 3 or more \$2.00 each

**McGREY'S YELLOW.** Large, bright buttercup-yellow. Exquisite bud and flower. Probably the best known of McGredy Roses.

\$1.50 each; 3 or more \$1.30 each

**MIRANDY.** Pat. 632. A glorious new Rose from California. Received the highest in the tests for the year 1915 in the All-American Rose Selection. Big, ovoid buds, deep, rich, dark red with black shadings; beautifully formed blossoms with a delightful fragrance.

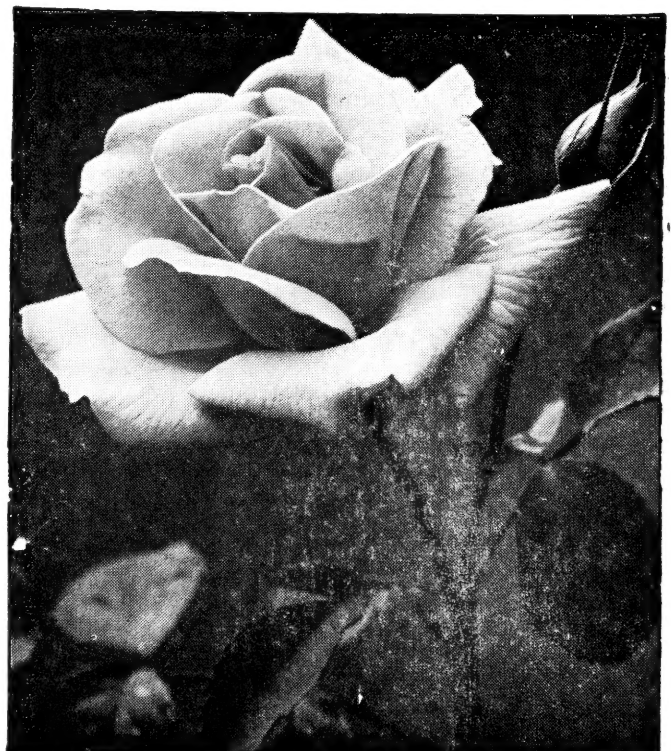
\$2.25 each; 3 or more \$2.00 each

**MME. COCHET-COCHET.** Pat. Exp. Coppery pink. From the time of its introduction this lovely Rose has been a continuous success. The long-pointed buds of coppery pink open to large, semi-double, artistic flowers. Rich honey-like fragrance.

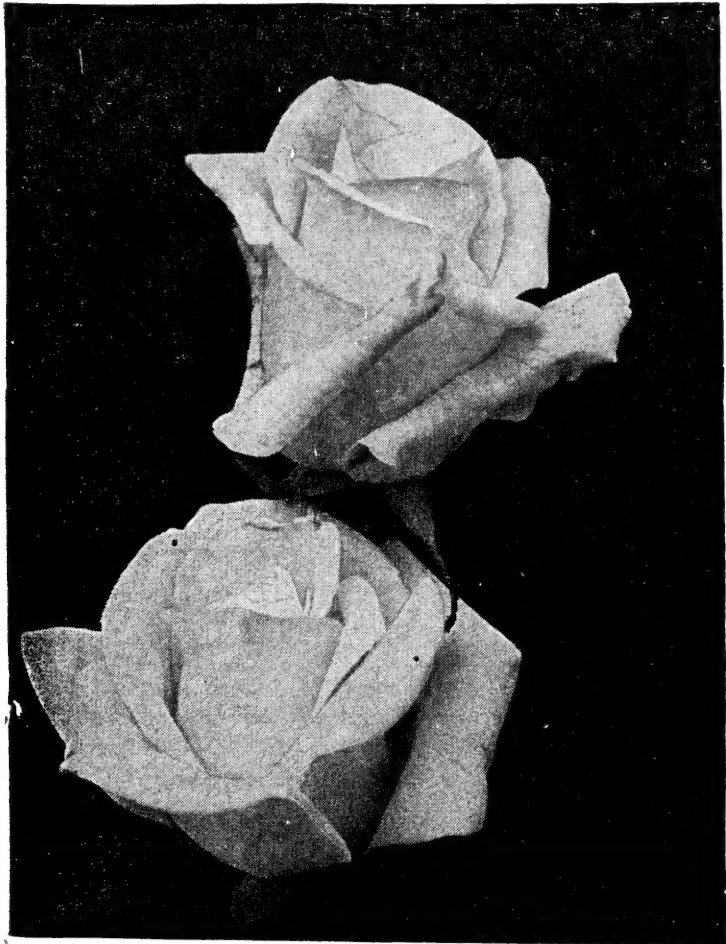
\$1.75 each; 3 or more \$1.55 each

**MME. HENRI GUILLOT.** Pat. 337. Exquisitely formed urn-shaped buds of raspberry-pink lit with flame change to a brilliant satiny watermelon-pink blend when open. A fragrant 25 petaled rose with handsome shiny foliage.

\$2.00 each; 3 or more \$1.75 each



DR. DEBAT



PRESIDENT HERBERT HOOVER

**MOJAVE.** Pat. 1176. All-American winner for 1954.

A blend of dark orange-red, pointed buds opening into blooms of glowing copper-orange. Long, slender buds and large, pleasingly fragrant flowers. 20 to 25 petals.

\$2.75 each; 3 or more \$2.40 each

**NEW YORKER.** Plant Pat. 823. Fiery red blooms on long, stiff stems, a brilliant red that does not fade or blue. Well-formed bud and bloom, very fragrant, on a sturdy plant, resistant to black-spot.

\$2.25 each; 3 or more \$2.00 each

**NOCTURNE.** H.T. (Swim.) Plant Pat. 713. Long-pointed buds of perfect form open to blooms of bright cardinal-red with dark shadings. Somewhat lighter, a coppery red, during the hottest part of summer. Blooms of show, shape and size: intensely fragrant. Good foliage and vigorous plants like the great Rose, Charlotte Armstrong, which is one of its parents.

\$2.25 each; 3 or more \$2.00 each

**PEACE.** Pat. 591. Sensational new rose; buds open yellow edged cerise; glorious 5-inch blooms of firm, alabaster-white, each petal edged with pink that deepens as the flower opens. Very double, strong and vigorous grower with superb foliage. This new Rose appropriately heralds the dawn of Peace.

\$2.50 each; 3 or more \$2.20 each

**PRESIDENT EISENHOWER.** Patent 1217. A new unfading great red rose with strong, sweet, old-rose fragrance. Large 4-5" blooms with 35-40 petals on strong single stems. Leathery, dark green, disease-resistant foliage.

\$2.25 each; 3 or more \$2.00 each

**PRES. HERBERT HOOVER.** H. T. Multi-colored. Large, delightfully fragrant blooms of scarlet, yellow, cerise and flame, on erect, firm stems. One of the most popular roses for many years. Its tall-growing plant blooms freely.

\$1.50 each; 3 or more \$1.30 each

**RED RADIANCE.** Clear, genuine red. The counterpart of Radiance and its inseparable companion in the garden. Has all the qualities of Pink Radiance but a richer color.

\$1.50 each; 3 or more \$1.30 each

**SAN FERNANDO.** Pat. 785. All-America Selection in 1948. Long perfectly shaped buds of rich currant-red color opening into flowers of intense scarlet. Very fragrant and a vigorous grower.

\$1.50 each; 3 or more \$1.30 each

**SOUER THERESE.** Long, pointed buds of chrome-yellow, heavily marked with carmine with the open flower a rich daffodil-yellow. The blooms come freely on splendid cutting stems of 3-4 ft. plants. Very fragrant.

\$1.50 each; 3 or more \$1.30 each

**SUTTER'S GOLD.** Patent No. 885. New All-American winner for 1950. Brilliant golden buds, shaded coppery orange and vermillion; intensely fragrant. Strong stems with few thorns; vigorous, bushy plants, disease resistant and free in bloom, 25 to 30 petals, bright, glossy foliage.

\$2.25 each; 3 or more \$2.00 each

**SYMPHONIE.** Pat. 958. Luscious pink with silvery tint and deeper veins. Unusually large size, with broad, double, wavy petals. Strong growing and free blooming. Very fragrant.

\$2.00 each; 3 or more \$1.75 each

**TALISMAN.** H.T. Multi-colored. A glorious combination of orange, yellow and rose-red. A popular rose for cutting, with its choice, distinctive form. The fragrant blooms are most highly colored in the fall.

\$1.50 each; 3 or more \$1.30 each

**TIFFANY.** Patent No. 1304. The newest pink All-American Winner for 1955. Pleasantly fragrant long-pointed buds of pink and gold with 30-40 petals opening into a dainty pink with a heart of gold. Blooms come singly and upright on strong stems.

\$2.50 each; 3 or more \$2.20 each



**CRIMSON GLORY**

(See description on Page 4)

**WHITE SWAN.** Pat. 1115. A fine new pure white Rose of graceful, high-centered form, carried on a very long stem. Ample, healthy, dark green foliage on a 3-foot plant.

\$2.25 each; 3 or more \$2.00 each

## EVERBLOOMING FLORIBUNDAS

**CIRCUS.** Pat. 1382. The only All-America Winner for 1956 and the first multi-color Floribunda in AARS history. A magnificent show of changing colors—orange, bright yellow, pink and red. Excellent for bedding, bordering or cutting.

\$2.50 each; 3 or more \$2.20 each

**FASHION.** Plant Patent 789. New Floribunda All-America Award winner for 1950. Bright coral-peach, a most amazing color, so soft and lovely, a new color in Roses. The open flowers are 3 inches across or larger; semi-double; pleasing old-rose fragrance. 2-2½ ft., with few thorns.

\$2.00 each; 3 or more \$1.75 each

**FLORADORA.** Dazzling bright cinnabar color with shades of scarlet. Buds are exquisitely formed, produced in profusion on a neat, symmetrical bush. Foliage glossy olive-green. Grows to a height of 2½ feet.

\$1.50 each; 3 or more \$1.30 each

**GOLDBLOCKS.** Plant Pat. 672. Rich, golden yellow. Buds open to very double blooms up to 2 inches across; spreading, bushy plants 2½ ft. high. The best yellow Floribunda.

\$1.75 each; 3 or more \$1.55 each

**INDEPENDENCE.** Pat. 1036. Brilliant orange-scarlet blooms on 2½-3' plants with rich glossy foliage. The vivid flowers are up to 4" across, do not fade, and possess a moderate old-fashioned Tea Rose fragrance.

\$1.75 each; 3 or more \$1.55 each

**JIMINY CRICKET.** Patent 1346. New 1955 All-America Winner. Urn-shaped, tangerine buds become a blend of orange and vermilion tones softening to a good coral pink. Free blooming 3-4' plants with glossy green foliage. Quite fragrant for a floribunda.

\$2.00 each; 3 or more \$1.75 each

**MA PERKINS.** Patent 1148. 1953 All American winner. Daintily formed buds of soft, sweet pink open to spicily fragrant, 25-petaled blooms of shell-pink, often dusted with tiny freckles of deeper pink. Makes good, bushy plants about 3 feet high

\$2.00 each; 3 or more \$1.75 each

**MASQUERADE.** Pat. 975. Truly unique and different. Each cluster of 10 to 25 buds show blooms of yellow, red, pink, lemon and sometimes orange. All of these colors appear at once in a magnetic combination. A vigorous, 3 ft. plant.

\$2.00 each; 3 or more \$1.75 each

**PINOCCHIO.** Plant Pat. 484. No doubt the most loved Floribunda; rich salmon flushed with gold; very double attractive formed buds and bloom 1½ inches across. Free branching, continuous blooming plants grow to 20 to 24 inches high.

\$1.75 each; 3 or more \$1.55 each

**PINOCCHIO RED.** Pat. 812. Large, unfading clusters of rich carmine. Delightful perfume, like wild roses. Bushy; very free flowering.

\$1.75 each; 3 or more \$1.55 each

**SPARTAN.** Pat. 1357. Hardest, finest Floribunda ever created! Gorgeous burnt-orange buds slowly open revealing large high-centered hybrid-tea-shape blooms, with 35 to 40 petals of a sparkling warm orange-red color. A sweet, old Rose fragrance and ideal for cutting. Prolific bloomer.

\$2.75 each; 3 or more \$2.40 each

**VOGUE.** Pat. 926. Pastel scarlet opening to rose-pink blooms in clusters. Double, high centered, and fragrant. Glossy foliage on a compact, upright-growing plant.

\$2.00 each; 3 or more \$1.75 each



**GRANDIFLORA ROSES**

**BUCCANEER.** Pat. 1119. Long, sleek, buttercup-yellow buds and blooms with about 30 petals and light, very sweet fragrance. Fast-growing, extra tall, upright plants. Good for cutting.

\$2.50 each; 3 or more \$2.20 each

**CARROUSEL.** Pat. 1066. Large, attractive, unfading dark red buds and blooms having Hybrid Tea form, frequently single on long stems. 20 petals. Vigorous upright, 3 foot plants.

\$2.00 each; 3 or more \$1.75 each

**MONTEZUMA.** Pat. 1383. A vivid rosy-salmon flower with a wealth of bloom. Long slender buds open to 4 in. blooms. Dense foliage on 3 to 5 ft. plants. Great quantities of flowers always available.

\$2.75 each; 3 or more \$2.40 each

**QUEEN ELIZABETH.** Pat. 1259. 1955 All-America Winner. The first rose in the new Grandiflora Rose Classification; a combination of Hybrid Tea and Floribunda characteristics. Large pure pink flowers of a Hybrid Tea borne in clusters of a floribunda with individual stems 6-8" long for cutting on plants 3-4' tall.

\$2.50 each; 3 or more \$2.20 each

**HARDY CLIMBING ROSES**

Useful for covering porches, trellises, arbors, fences, walls and banks, making a superb display of bloom. Prune after flowering.

**BLAZE.** Pat. Exp. Scarlet-red flowers in great profusion and under favorable conditions it often repeats.

\$1.50 each; 3 or more \$1.30 each

**DR. J. H. NICOLAS.** Pat. 457. Deep rose-pink. Very large, fully double blooms like Hybrid Teas, with a rich perfume. A free-blooming climber that is especially fine as a pillar rose. Repeats through summer and fall.

\$2.00 each; 3 or more \$1.75 each

**KING MIDAS.** Plant Pat. 586. Longest-blooming hardy yellow climbing Rose. Tight buds and lovely 4-inch Hybrid-Tea-like flowers in clusters 4 to 6 inches across on strong stems. Disease-resistant.

\$2.00 each; 3 or more \$1.75 each

**NEW DAWN.** Pat. Exp. The everblooming Dr. W. Van Fleet with which it is identical except that it blooms throughout the Summer and Fall.

\$1.50 each; 3 or more \$1.30 each

**PAUL'S SCARLET CLIMBER.** Vivid scarlet, shaded crimson; semi-double flowers in clusters borne in profusion.

\$1.50 each; 3 or more \$1.30 each

**EVERBLOOMING CLIMBING ROSES**

These roses require winter protection in our climate in exposed locations.

Before cold weather untie the plant from its support, loosen the roots on one side, lay the branches on surface of soil and cover with 8 inches of earth.

**CLIMBING CRIMSON GLORY.** Plant Pat. 736. Richly fragrant, deep crimson blooms like the bush Crimson Glory, and the same disease-resistant foliage. Blooms all season.

\$2.50 each; 3 or more \$2.20 each

**CLIMBING TALISMAN.** A climbing form of the famous Talisman Rose. A fine combination of orange, yellow and rose-red. Blooms monthly.

\$1.50 each; 3 or more \$1.30 each

**GOLD RUSH.** Masses of handsome yellow flowers, nice foliage, and unlike most hardy climbers, it will produce flowers on its new growth all season. A good hardy, monthly yellow climber.

\$2.00 each; 3 or more \$1.75 each

**HIGH NOON.** Plant Pat. 704. Beautiful golden yellow buds on long stems, fine for cutting; blooms constantly; strong grower.

\$2.50 each; 3 or more \$2.20 each

**ORDER EARLY.** Don't delay! Send your order today and be confident of receiving the finest Roses in America.

**CULTURE OF ROSES FOR BEST RESULTS**

Roses prefer a good garden loam with a plentiful supply of organic matter incorporated. Soils of this nature retain moisture well and roses like plenty of moisture but resent wet feet. Provide for drainage if the rose bed is located where water does not drain readily.

If soil is hard or drainage poor dig out the rose bed to a depth of 2 feet and fill the bed with a few inches of stone in the bottom for drainage and cover the stones with fertile soil incorporated with 10% Peat Moss, Tamp back-fill firmly until hole is half-refilled, **FLOOD WITH WATER.** After back-filling use 2 tablespoons of G&O Rose Food on the surface, never at the roots.



Complete all-purpose Rose Spray. Offers the first definite mildew and black spot control. Combining an insecticide it kills all insects, including sucking and leaf-eating types.

**Kit "A"** (Protects 12 to 20 roses a season) \$2.49

**Kit "B"** (Protects 50 to 80 roses a season) 6.25

**Kit "C"** (Protects 100 to 160 roses a season) 9.50

**Kit "E"** (Protects 6 to 10 roses a season) 1.69

**TRIOGEN DUST**

Serves same purpose as liquid Triogen only it is in dust form. 1 lb. \$1.19; 5 lb. \$5.00.

**ROSE FOOD 7-8-5**

G & O Rose Food is used in carload lots by the leading rose growers in America. Continually feeds all through the season. Improves the stock each year. Produces better foliage and blooms because its an organic formula—100% Plant Food.

5 lb., 85c; 10 lb., \$1.45



**Peat Moss.** (Ground) Applied as mulch, conserves moisture, keeps down weeds, mellowes and acidifies the soil and beautifies at same time. Water well before and immediately after applying as a mulch. 1 bale covers 125 sq. ft. to depth of 2 inches. Two bu. Bag, \$2.50; Large Bales, \$5.00; Half Bales, \$3.00.

**Cash and Carry.** Half Bales, \$2.75; Large Bales, \$4.75.

# HARDY CHRYSANTHEMUMS

## LOVELY HARDY CHRYSANTHEMUMS KNOWN AS HARDY GARDEN MUMS

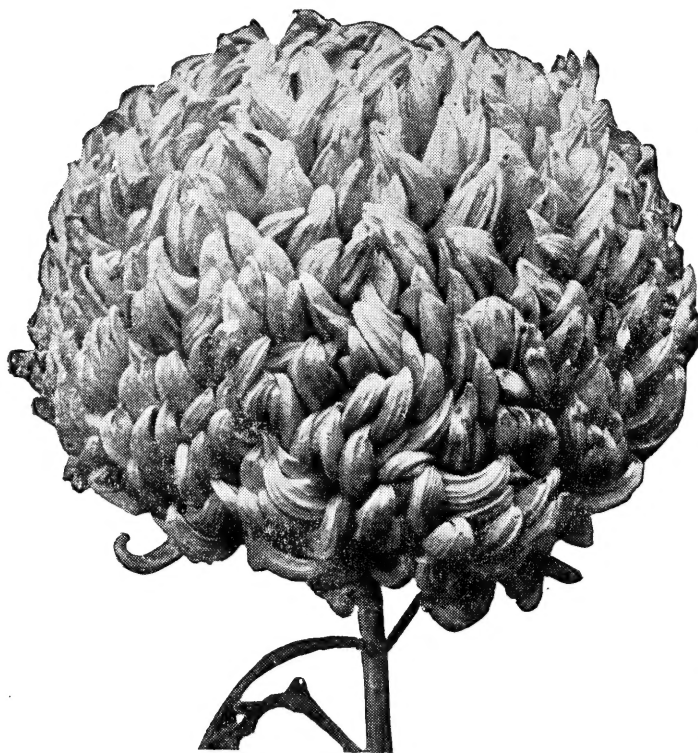
No perennial has increased in popularity as rapidly as has the "Hardy Garden Mums" producing as they do, hundreds of brilliant blooms at so little a cost. They crown the Fall flower season, and your summer gardening efforts go out in a blaze of glory.

### CULTURE

They thrive in any good garden soil and need little care other than guarding against insects, and applying a straw mulch in the late Fall for winter protection. To grow nice stocky plants, pinch the terminal shoots once or twice during the season to keep the plants sturdy and bushy. First pinching when the plant is 6 inches tall to induce lateral branches. When the lateral branches are 8 inches high, their tips may be pinched out again to produce more branches. Discontinue pinching by July 15th. The very early blooming varieties should not be pinched after July 10th. A well pinched or topped plant will grow strong and sturdy needing no staking and bloom abundantly. Avoid planting them in a shady location.

Strong plants from pots ready for delivery May 1st through June.

On order for \$5.00 or more, postage prepaid. Orders for less than \$5.00, please add 40c for packing and postage.



MAJOR BOWES

### Large Early Flowering Chrysanthemums

#### Garden and Greenhouse Large-Flowering Type.

Each year we have more requests for the large greenhouse type chrysanthemums. These are not as hardy as the garden type mums but can be carried over winter very successfully in a cold frame under glass. To produce those big 5-6 inch blooms they require disbudding, leaving one to three flowers to each plant.

We offer only the choicest early varieties:

They are the earliest large flowering type suitable for garden planting, and they are safest planted where they can be protected in case of an early frost.

**Amber Bright:** Large golden bronze incurved. Oct. 15  
**Major Bowes.** Deep lavender-pink. Oct. 15  
**Mrs. H. E. Kidder.** Deep lemon-yellow, incurved. Oct. 15

Any of the above varieties, potted plants 60c each; 3 for \$1.60.

### Garden Type Mums

#### HARDY DECORATIVE VARIETIES

##### Highlights In Newest Varieties

##### Improved Favorites

**Freya.** Very large flowering. Deep golden yellow with 4 in. blooms and strong stems. Medium height. Oct. 1.

**Old Lavender.** Large, massive, pure lavender flowers on strong, sturdy stems. Medium height. Oct. 1.

**Plainsman.** New carnation-flowered mum. Beautiful 3 in. red-bronze-gold extremely double flowers on strong stems. Lacinated, notched, crisp carnation like petals. Medium height. Sept. 20.

**Spellbinder.** Huge fluffy 3½ in. blooms of smooth canary to butter yellow. Good for cutting. Medium height. Sept. 25.

Any of the above varieties 75c each; 3 for \$2.00.

#### DECORATIVE VARIETIES OF SPECIAL MERIT INCLUDING LATE FINE INTRODUCTIONS

**Admiration.** Blend of bright peach, salmon fawn and soft red gold flushes. Full double 3 in. blooms. Medium height. Sept. 28.

**Autumn Beauty.** A new brilliant sparkling reddish chestnut. Best early bronze. Medium height. Sept. 15.

**Autumn Song.** Large wine-red shading to carmine. Entirely different color in Mums. Medium height. Sept. 20.

**Betty.** Splendid upright rose-pink without a trace of magenta. One of the finest pinks. Tall. Sept. 28.

**Charles Nye.** Large 3 in. fully double, rounded flowers of rich buttercup yellow on strong plants. Medium height. Sept. 25.

**Early Crimson.** Grand crimp-petaled, bright crimson double flowers on a rigid, upright plant. Very hardy. Medium height. Sept. 15.

**Golden Gopher.** Deep cadmium-orange with tints of buttercup-yellow on tips of petals. Upright plant. Medium height. Sept. 20.

**Lee Powell.** Masses of fluffy chinese-yellow flowers with a slight orange tinge at center. Tall, upright bush. Sept. 25.

**Northern Queen.** Large double flowered rose pink decorative variety. Shiny glossy foliage and sturdy growth characteristics. Medium height. Oct. 5.

**Red Riding Hood.** A favorite bright red decorative variety. Medium height. Oct. 1.

**Royal Robe.** Beetroot-purple flower with bluish sheen reflecting from the center. Good all-round variety. Color superb. Medium height. Sept. 15.

**Shalimar.** Large, saucer-shaped, cream-white with sulphur-yellow center. Strong, upright plant. Sept. 15.

**Tangerine.** Large decorative variety. A very unusual deep orange color. Medium height. Sept. 25.

Any of the above varieties 60c each; 3 for \$1.60.

### POMPON VARIETIES

Very double varieties known as pompons; large and small varieties—the small types are known as buttons. Suitable for gardens and cutting.

**Alert.** Large, early, dark purple pompon with a silvery cast. Very fine. Medium height. Sept. 20.

**Goblin.** The Spirit of Hallowe'en. Very hardy. bronze button type. Medium height. Sept. 25.

**Golden Wonder.** A very fine large pompon with golden yellow blooms. Excellent for cutting. Medium height. Sept. 25.

**Jubilee.** Opens crimson, mellowing to a deep clear red. Plant all aglow for weeks. Medium height. Oct. 1.

**Red Gold.** Button type. Early brilliance in this showy reddish orange-bronze variety. Clean grower. Medium height. Sept. 15.

**White Wonder.** Fine early flowering, white pompon. Ball-shaped blossoms are soft creamy white opening to a crisp clean white, lovely in all stages. Medium height. Sept. 25.

Any of the above varieties 60c each; 3 for \$1.60.



BETTY

### AZALEA OR CUSHION VARIETIES

Early varieties especially suitable for garden planting.

**Champ Cushion.** Deep bronze red blooms. Strong plant growth. Dwarf habit. Good foliage. Sept. 25.

**Golden Carpet.** A creeping mound of golden yellow pompons. Superb for border. Oct. 1.

**Golden Cushion.** Bright golden yellow blooms, flecked and striped red. Double. Dwarf habit. Sept. 20.

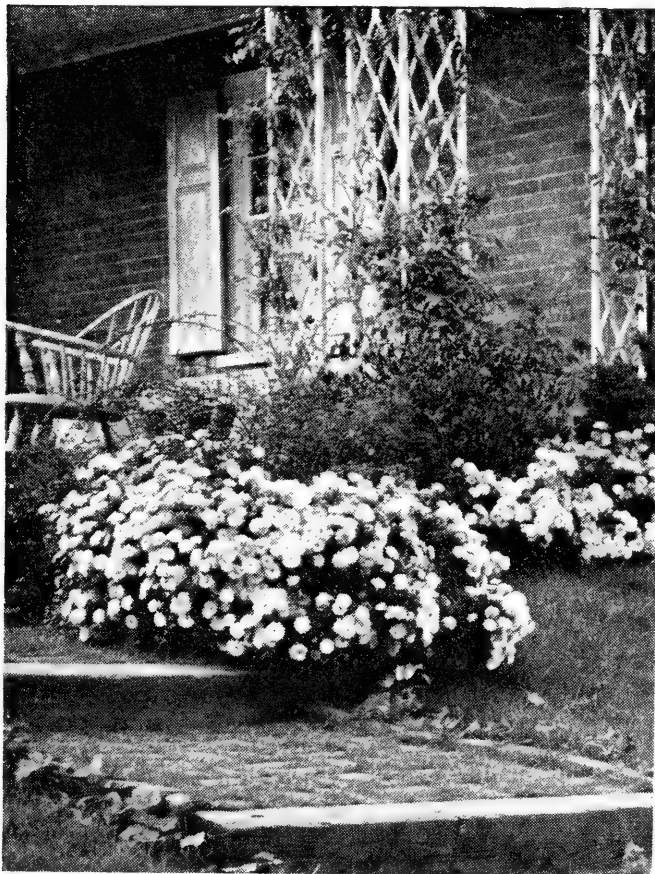
**Mahogany Cushion.** Twisted and neatly nested petals of Jasper Red shading to polished Mahogany. Early. Fine cushion form. Sept. 25.

**Powderpuff.** A gracefully spreading habit. Fully double white, cream topped blooms. Fine for edging. Dwarf habit. Sept. 15.

**Red Cloud.** Early. Low. Fully double. A combination of mahogany and maroon. Blooms until frost. Oct. 1.

**Rouge Cushion.** A far superior red semi-cushion. Intense red-cushion flowers show a small bright yellow center when matured. Sept. 25.

Any of the above varieties 60c each; 3 for \$1.60.



AVALANCHE

### TESTIMONIAL

#### FIRST SATISFACTORY PLANTING

Lancaster, Pa.

As many people from this city and others have complimented me on the landscaping and planting at my new home, I think you should know how pleased I am also. In all my experience in building, and consequently planting, this is the first planting that has been satisfactory.

F. B. Trissler

## *For a Beautiful Garden Next Spring*

Plant Barr's choicest top size Holland Bulbs this Fall. All bulbs carefully selected to give you the utmost in garden beauty. Let us quote on your want list during their blooming period.

Our listing consists of the best Spring flowering bulbs including Tulips, Hyacinths, Daffodils, Crocus, etc. Our Bulb catalog will be mailed to you on or about September 1st.

# PERENNIAL PLANTS

## Hardy Dependable Favorite Varieties

From early Spring to late Autumn there are always flowers to enjoy where Perennials are planted, and the blooms are equally enjoyable growing in beds or borders on the lawn or cut for table and home decoration. Once planted they continue to bloom and increase in beauty each succeeding year.

Perennials require little attention (weeding and watering during the growing season and mulching with fertilizer in the Fall) and, as each variety has a fixed period to flower, a succession of bloom can be enjoyed throughout the season. Plant 3 or more of a kind in a group for the best effect.

We pre-pay parcel post on orders of \$5.00 or more, under \$5.00, please add 40c for packing and postage.

**Anchusa myosotidiflora.** (Bugloss) 12-15 in. Clusters of small blue flowers, late Spring; part shade or sun. 55c each; 3 for \$1.50.

**Aquilegia Mrs. Scott's Hybrids.** (Long spurred Columbine). Various colors. 55c each; 3 for \$1.50.

## HARDY ASTER

Lovely autumn-flowering perennials, the value of which for border decorations, or cut flowers, is inestimable. They range in height from about 2 to 3 feet. Flower in September.

**A. Beechwood Challenger.** 2-2½ ft. Crimson.

**A. Harrington Pink.** 2-2½ ft. Rose lavender.

Any of the above 65c each; 3 for \$1.75.

## ASTILBE (Spirea)

Thrives best in part-shade. Blooms July, August, September.

**A. Fanal.** 18-24 in. Plumeblooms, bright red, July and August.

**A. Peachblossom.** 18-24 in. Soft Pink.

**A. Rheinland.** 18-24 in. Carmine-pink.

Any of the above \$1.00 each; 3 for \$2.50.

**Chrysanthemum maximum.** (Shasta Daisy). 15-24 in. Large, pure white, long-stemmed daisy with yellow center all season. 65c each; 3 for \$1.65.

**Coreopsis lanceolata.** 2 ft. Single, butter-cup yellow, darker center, all season. 55c each; 3 for \$1.40.

## DIANTHUS (Hardy Pinks)

**D. Plumarius.** 10 to 12 in. Countless fragrant pink flowers all Summer. 60c ea.; 3 for \$1.55.

## 4 CHOICE DELPHINIUM

The Delphinium, or Perennial Larkspur, is one of the finest blue flowers cultivated, and among the most useful and effective of hardy plants. Especially fine for the hardy border, although very effective almost anywhere.

The Best Varieties are Included in this Offer as Follows:

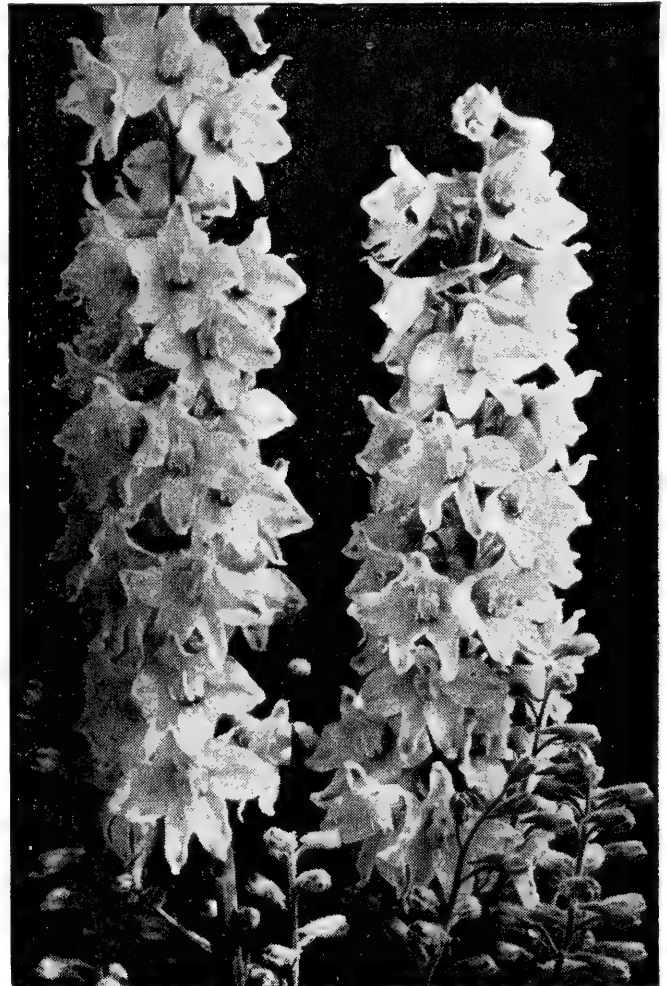
**Delphinium bellamosa,** large flowers of a rich deep blue shade.

**Delphinium belladonna,** beautiful sky-blue; flowers all summer until cut down by frost.

**Delphinium Galahad,** white.

**Delphinium Giant Pacific Hybrids,** large flowers on long spikes, in mixed shades of blue and white.

Any of the above 60c ea.; 3 of one kind for \$1.55.



HYBRID DELPHINIUM

**D. Spicy Pink.** 12 in. Rich salmon-pink, cushion-like habit, blooming practically all summer. 60c ea.; 3 for \$1.55.

**D. Sweet William.** 1½ ft. Colorful flowers in clusters on tall stems, during June and July. Mixed colors. 50c ea.; 3 for \$1.25.

## DICENTRA (Bleedingheart)

**D. Eximia.** Fringed, 12 in. Pink, heart-shaped flowers from late Spring to frost, fern-like foliage. 60c ea.; 3 for \$1.55.

**D. Spectabilis.** 2-2½ ft. Long, pendant racemes of heart-shaped flowers. Rosy-red and white, early summer, part shade, good for cutting. \$1.00 ea.; 3 for \$2.50.

**Eupatorium coelestinum.** (Mistflower). 2 ft. beautiful celestial blue flowers, similar to the annual Agatum. Excellent for cutting, July and August. 55c ea.; 3 for \$1.40.

**Euphorbia corollata.** (Flowering Spurge). 2 ft. Umbels of pure white flowers, much like Baby-breath, June to August. 60c ea.; 3 for \$1.55.

**Gaillardia grandiflora.** 18 in. Large, orange to maroon, daisy-like flowers are born all summer. 55c ea.; 3 for \$1.40.

**Gypsophila.** (Bristol Fairy). 2-3 ft. Large panicles of double white flowers throughout the summer. Beautiful in the border and very popular as a cut flower. 75c ea.; 3 for \$2.00.

**Helianthus fl. pl.** "Soleil d'or." Clear yellow flowers Dahlia-like, large and very double, August to October. 60c ea.; 3 for \$1.50.

**Heliopsis Summer gold.** 2-3 ft. Semi-double. Deep golden yellow flowers throughout the summer. Splendid for cutting. 55c ea.; 3 for \$1.40.

## HEMEROCALLIS (Daylily)

The Hemerocallis are among the most popular of hardy plants; by planting various kinds, a succession of flowers can be had all summer long. Hardy plants immune to insects or disease, in various shade of yellows to reddish bronze.

**H. Flava.** 2 ft. Yellow, compact plants. June and July.

**H. Gratia.** 3 ft. Massive gold reddish mahogany flower with big golden yellow throat; center of petals veined yellow. July.

**H. Kwanso fl. pl.** 4 ft. Orange, red-shading, June and July.

**H. Tasmania.** 2½-3 ft. Chinese coral overlaid with purplish glow, star several shades deeper, center golden yellow. June.

**H. Thunbergi.** 3-4 ft. Bright gold flowers in September.

Any of the above 50c ea.; 3 for \$1.25

**H. Hyperion.** 3-4 ft. Large fragrant, waxy blooms of soft canary-yellow. July and August.

**H. Linda.** 2½ ft. Soft pale amber yellow or buff. Throat of somewhat deeper tone is separated from main color by a delicately shaded bank of soft mahogany.

**H. Mikado.** 2½-3 ft. Large flowers of deep orange with maroon markings on center petals. July.

**H. Rajah.** 2½-3 ft. Light burnt orange, circular deep chestnut-red or mahogany, violet shadings, throat old gold. July.

Any of the above 75c ea.; 3 for \$2.00

**Heuchera sanguinea (Coralbells).** 12-15 in. Bright crimson, bell-shaped flowers, dwarf habit. June to September. 60c ea.; 3 for \$1.55.

## HOSTA (Funkia)

**H. Caerula.** 18-24 in. Blue flowers. July and August. Shade-loving plant. 50c ea.; 3 for \$1.30.

**Iberis sempervirens. (Candytuft).** 8-10 in. Clusters of glittering white flowers in early Spring. Evergreen. 55c ea.; 3 for \$1.50.

## PLANTS ARRIVED FRESH AND STRONG

Philadelphia, Pa.

I received my order and I want to thank you and also congratulate you for the fine specimens you picked for my order. A friend picked them up at our Philadelphia house and took them to Point Pleasant and we had them in the ground, properly placed by 6 P. M. and they look so fresh and strong that I am sure they are going to be a pleasure to look at for many years to come.

F. S. K.



PALE MOONLIGHT

## BARR'S NEW AND SELECTED BEARDED IRIS

Exciting new and rare bearded Iris. You will find the beauty of the Rainbow is captured and wafted into the grace and color of the modern Iris. The following varieties are selected to give you the finest varieties for your garden. In planting, avoid fresh manure and plant only deep enough to cover the roots.

### NEW FINEST VARIETIES

**New Snow.** Pure White.

\$2.00 ea.; 3 for \$5.00.

**Casa Morena.** Large glowing coppery chestnut-brown.

**Chivalry.** Beautiful robin egg blue.

**Orelia.** Handsome, lively rich brown red.

**Pink Cameo.** Fresh, pure cameo-pink.

**Russet Wings.** Smooth copper and apricot combination.

**Velvet Dusk.** Deep glistening black-velvet.

Any of the above—\$1.25 each; 3 plants, your selection \$3.00.

### BEST OLDER SELECTIONS

**Arab Chief.** Brilliant rich burnt orange.

**Garden Flame.** Rich rosy garnet, tinted brown.

**Inspiration.** Gorgeously vivid rose-cerise.

**Solid Mahogany.** Deep-flowered mahogany red.

Any of the above—\$1.00 each; 3 plants, your selection, \$2.50.

### STANDARD VARIETIES

**Alta California.** Light yellow.

**California Gold.** Best deep yellow. Superb.

**Cheerio.** Brilliant red.

**Dominion.** Lavender velvet.

**Jake.** White.

**Mme. Louis.** Ivory white.

**Mme. Ulman.** Soft light blue. Prolific grower.

**Pale Moonlight.** Soft sky blue. Gigantic.

Any of the above—50c each; 3 plants, your selection, \$1.25. 12 plants, your selection, \$3.60.

### LYTHRUM (Loosestrife)

**L. sala roseum.** 18-24 in. plume like pink blossoms from June to frost.

**L. mordens pink.** 2-3 ft. Spikes covered with deep pink florets, from June to late September, very hardy.

Any of the above 60c ea.; 3 for \$1.50

**Monarda splendens.** (Blazing Beebalm). 3 ft. Big heads of bright crimson flowers in mid to late summer, part shade. 55c ea.; 3 for \$1.50.

## ORIENTAL POPPIES

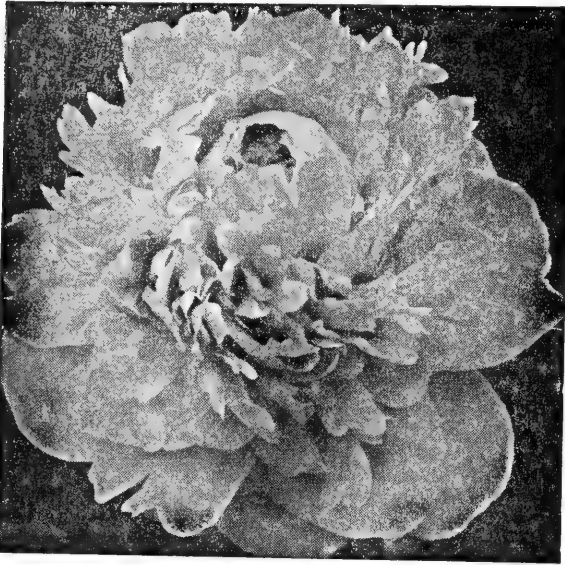
For a gorgeous display of rich and brilliant coloring nothing equals them during their period of flowering in May and June. Potted plants.

**P. orientalis** (Barr's White). 2-3 ft. A pleasing contrast with red and pink varieties.

**P. orientalis** (Toreador). 3-3½ ft. Rich scarlet blooms, blotched deep maroon-black at throat, early Spring.

**P. orientalis** (Sass Pink). 2-3 ft. Beautiful pleasing pink, good foliage.

Any of the above .75 ea.; 3 for \$2.00



PEONY, Sarah Bernhardt, \$1.50 each

## PEONIES

Beloved by everybody, no flower can exceed the Peony for popularity. From year to year its popularity increases, so that it has been very appropriately termed the King of Flowers.

**Choicest Standard and Late Introductions (Strong 3 to 5 eye Blooming-Size Roots)**

(E) Early; (M) Midseason; (L) Late Blooming.

<b>Edulis Superba.</b> Old-rose-pink (E) .....	1.25
<b>Felix Crousse.</b> Ruby red (M) .....	1.50
<b>Festiva Maxima.</b> Snowy-white (E).....	1.25
<b>Karl Rosenfeld.</b> Dark Crimson (M) .....	1.25
<b>Lora Dexheimer.</b> Bright Crimson (M) ....	1.50
<b>Mme. de Verneville.</b> White (E) .....	1.25
<b>M. Jules Elie.</b> Glossy shell-pink (M).....	1.25
<b>M. Martin Cahuzac.</b> Maroon (M) .....	1.50
<b>Phillipe Rivcire.</b> Dark Crimson (M) .....	1.50
<b>Richard Carvel.</b> Brilliant Crimson (E) ....	1.50
<b>Sarah Bernhardt.</b> Dark rose-pink (L).....	1.50

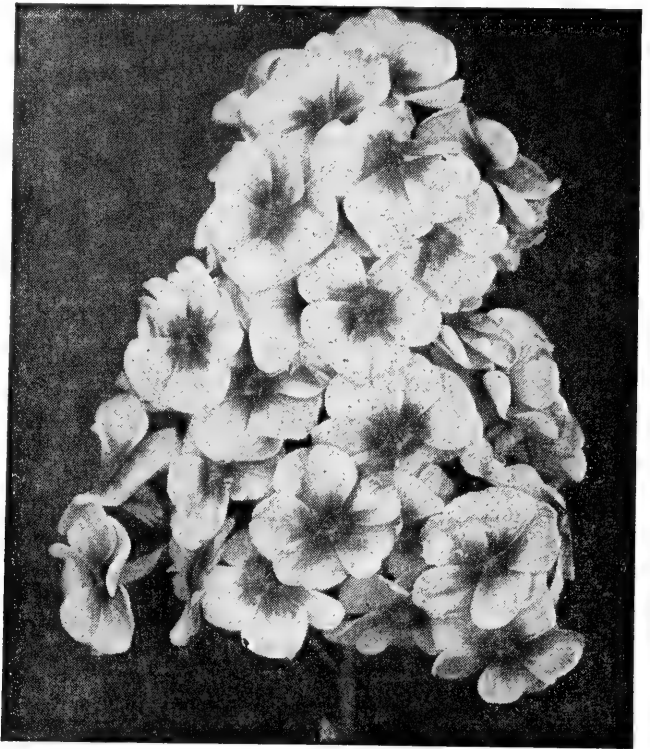
3 of any one variety less 10c ea. Orders for \$5.00 or more, postpaid.

Peonies are best planted in the fall or very early in spring.

## ANTHEMIS

Hardy Marguerite — Chamomile

**Tinctoria Perry's Variety.** Nicely formed bushes 15 to 18 inches in height with Fern-like foliage covered from June to October with large, well-shaped golden yellow daisies, nearly 3 inches across. Valuable for cutting. 55c ea.; 3 for \$1.40.



## CHOICE HARDY PHLOX

Phlox embody all the qualities desirable in a plant—hardiness, upright carriage, pretty foliage, fragrance, beauty and variety of color. Besides, Phlox have the added merit of being in bloom during the summer when other plants are out of bloom. July-Sept.

**E. I. Farrington.** Large heads of beautiful salmon-pink flowers.

**Fuerbrand.** Brilliant orange-scarlet; medium; blooms very freely.

**Leo Schlageter.** Bright scarlet-red.

**Mrs. Jenkins.** Large heads of pure white.

**Pink Charm.** Large pink—a late introduction—very desirable.

**Rhineland.** Very attractive, large, soft salmon pink blooms. One of the best of its color.

Any of the above 65c ea.; 3 of one kind for \$1.75.

## PHLOX SUBULATA (Mountain Pinks)

**P. s. alba.** (Creeping phlox). 4 in. white, early spring.

**P. s. amoena.** (Creeping phlox). 4 in. Bright pink, early spring.

**P. s. atropurpurea.** (Creeping phlox). 4 in. Bright purple, early spring.

**P. s. blue hills.** (Creeping phlox). 4 in. pale blue, early spring.

Any of the above 60c ea.; 3 for \$1.50.

**Plumbago larpentine.** 6-8 in. Bronzy red foliage and red buds turning to deep blue flowers from August to frost. Fine ground cover. 60c ea.; 3 for \$1.55.

**Polygonum reynoutria.** (Dwarf Lace Plant). 4-6 in. Very hardy, fast growing. Does best in full sun. Pale green foliage turning brilliant red in Autumn, producing pink sprays of flowers. 80c ea.; 3 for \$2.00.

**Pyrethrum.** (Painted Lady). Various colors, a favorite in every garden. Early June, good foliage all summer. 60c ea.; 3 for \$1.55.

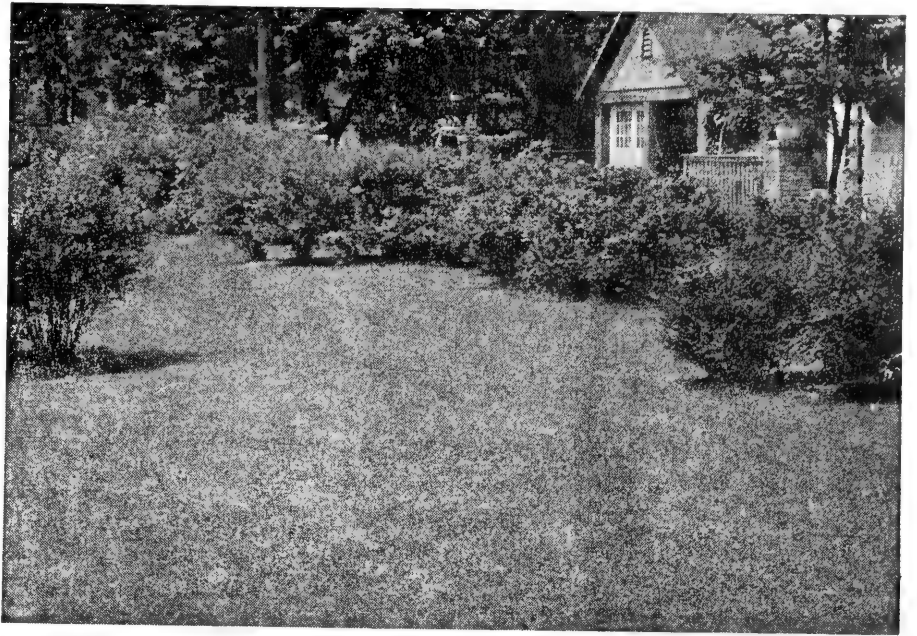
**Veronica spicata.** (Spike Speedwell). 1½-2 ft. Long sprays of bright blue flowers. July and August. 60c ea.; 3 for \$1.50.

For the  
Finest  
Quality Lawn

*Sow*

**Barr's**

# Quality Lawn Seed



Barr's Lawn Grass Seed Mixtures have been designed primarily to produce a lawn that is at once permanent, quick starting, and a good green color. They are guaranteed to be entirely free of Fall or Crab Grass seed. Recleaned by modern machinery. Barr's Lawn Grass Seed Mixtures are free from chaff, which makes these mixtures go twice as far. They test especially high in germination, providing a thick stand from the beginning which is essential in holding weeds in check.

One pound of seed will sow to 200 square feet of lawn. Keep ground constantly moist until grass is well started then water heavily at intervals during dry periods.

## **BARR'S SUNNYSIDE**

### **Finest Lawn Seed Mixture**

This is a combination of the most desirable permanent grasses—dwarf, close-growing, fine-leaved—producing a good green lawn even in dry weather. As the chief ingredient of a good lawn is superfine Kentucky Blue Grass there is a large proportion of this ideal grass in this mixture. No Timothy nor Rye nor coarse-bladed annual grasses are used to cheapen this mixture. It will germinate quickly and provide a neat, permanent lawn. Besides the Kentucky Blue Grass other varieties included are fine leaved perennial grasses and some Cheving's Fescue, a higher-priced grass that holds weeds in check much better than other varieties.

1 lb., \$1.50; 5 lbs., \$7.05; 10 lbs., \$13.20;  
25 lbs., \$30.65; 100 lbs., \$112.00 Prepaid.

## **BARR'S FANCY WHITE**

### **Dutch Clover**

Fancy recleaned seed. Excellent for lawns. Mix 2 to 4 ounces with each pound of above named mixtures if you want Clover on the lawn.

¼ lb., 65c; ½ lb., 95c; 1 lb., \$1.70

## **BARR'S GREEN MANTLE**

### **Lawn Seed Mixture**

This is a splendid mixture of good grasses for average conditions of soil and sunshine. It has a large proportion of Kentucky Blue Grass; also other desirable grasses for a good, quick effect which helps to hold weeds in check. Will give the lawn an enduring velvety, deep green mantle. Very free from weed seeds.

1 lb., \$1.30; 5 lbs., \$6.10; 10 lbs., \$11.40;  
25 lbs., \$26.50; 100 lbs., \$95.00 Prepaid.

## **BARR'S FINEST SHADY SIDE**

### **Lawn Seed Mixture**

Composed of shade-loving permanent varieties of fine-leaved grasses—no Timothy nor Ryegrass. Included are fine-leaved perennial grasses, which have proved best adapted for situations of a difficult nature due to shade.

1 lb., \$1.35; 5 lbs., \$6.35; 10 lbs., \$11.90;  
25 lbs., \$27.75; 100 lbs., \$100.00 Prepaid.

Feed lawns under trees heavily two times a year—spring and early fall. Failure under trees is due more to competition of tree roots than shade. Special Lawn Fertilizer. See page 33.

## **Practical Landscape Service For Prospective Clients**

Pleasing and satisfactory results are only attained through a careful study of your home and surroundings, and the selection and planting of the proper material. Many local and distant homes have been successfully landscaped from plans and planting services rendered by us.

Where tentative plans are required locally or in cities close by, we make no charge for this service.

You are cordially invited to visit our Nursery—to enjoy its beauty—to consult us relating to your proposed plantings or to inspect our products. A friendly welcome awaits you.

Sincerely, B. F. BARR, LEWIS E. BARR

# BARR'S---

## “Will Grow” Evergreens

Figures following names indicate approximate height when 50 years old. All evergreens are dug with a ball and burlapped. (B&B)

No other plants offer so much in value as Evergreens giving as they do enjoyment twelve months the year 'round. Then, too, they can be used in so many interesting ways and make a lasting improvement to any property.

### Douglas Fir

Medium-conical form and rapid growing. Foliage dark bluish-green, flat, very hardy. One of the best tall-growing evergreens. Use as specimen plant or in screens. Valued for its symmetrical, compact outline and persistence of lower branches.

**PSEUDOTSUGA douglasi, 70-80 ft.**

#### Douglas Fir

2-3 ft. -----	\$ 6.00	3-4 ft. -----	\$ 9.00
4-5 ft. -----			\$11.00

### The Retinospora

The graceful habit and the soft, fine foliage of the Retinosporas make them favorite Evergreens. These refined Evergreens attain unusual beauty. Recommended for foundation planting, hedges, or wind-breaks.

**C. plumosa, 20-30 ft. Plume Retinospora**

Wide, pyramidal; dense foliage, soft and plume-like; rich green; handsome and distinctive.

18-24 in. -----	\$ 3.00	2½-3 ft. -----	\$ 4.50
2-2½ ft. -----	4.00	3 -4 ft. -----	5.00

**C. pl. aurea, 10-15 ft.**

#### Golden Plume Retinospora

Wide, pyramidal; bright golden foliage, soft and plummy. Valuable for contrast.

15-18 in. -----	\$ 2.25	2-2½ ft. -----	\$ 4.00
18-24 in. -----	3.00	2½-3 ft. -----	4.50
3 -4 ft. -----			\$ 5.00

### How To Use Evergreens

When considering Evergreens for a planting visualize first what shape the plant should have for that particular location, keeping in mind, too, the ultimate height. By judicious pruning, many varieties may be kept dwarf.

### Delivery And Packing On Evergreens

All Evergreens are dug with a ball and burlapped. Free packing and free delivery on local orders within two (2) miles. On shipping orders, please add 15% to catalog prices for packing. Evergreens are satisfactorily shipped by freight, transportation collect. Delivery by truck beyond local area, 26c a mile, return-trip mileage. Trucking or calling for the stock eliminates the packing charges and transportation charges.



PLUME RETINOSPORA

Discount on quantity rate 5% on 5 Evergreens or more of one variety and size.





# SPRUCES

Spruces are valued especially for specimen planting either singly, or in groups on large lawns; too large growing for foundation planting. These magnificent trees do best in suburban sections. The stately, regular, pyramidal outline of these hardy trees is strikingly effective.

***Picea canadensis*, 60-80 ft. White Spruce**

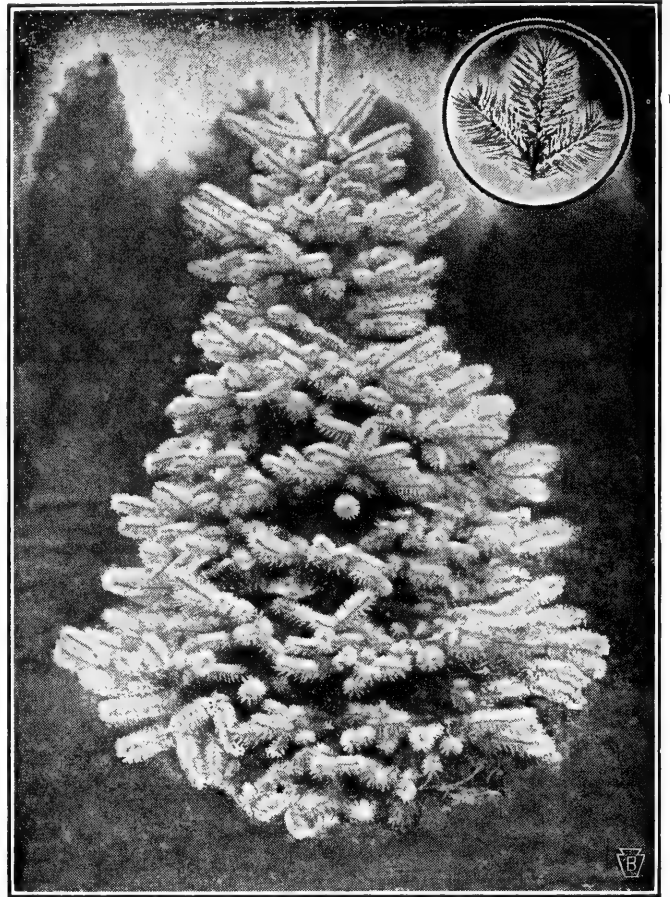
Similar to Norway Spruce. Needles colored gray-blue.

15-18 in. -----\$ 3.50    18-24 in. -----\$ 5.00  
 2-2½ ft. -----\$ 6.00

***P. excelsa*, 60-80 ft. Norway Spruce**

Fast growing; dark green; valuable for screens and hedges. When older makes a fine silhouette against the sky.

15-18 in. -----\$ 2.50    2-2½ ft. -----\$ 5.00  
 18-24 in. -----\$ 3.50    2½-3 ft. -----\$ 6.25  
 3-4 ft. -----\$ 7.50



MOORHEIM SPRUCE

***P. pungens*, 60-80 ft. Colorado Spruce**

Foliage light-green. Withstands heat and drought. Striking in appearance due to its perfect pyramidal outline and horizontally spreading branches.

15-18 in. -----\$ 3.75    18-24 in. -----\$ 4.50

***P. p. glauca*, 60-80 ft. Blue Colorado Spruce**

Silvery blue sheen, of vigorous growth and elegant habit with broad branches. Hardy in any exposure. Not so highly colored as Moorheim Spruce.

18-24 in. -----\$ 8.00

***P. p. Moorheimi*, 50-60 ft. Moorheim Blue Spruce**

Beautiful silvery-blue, broad, symmetrical tree making a striking appearance as a specimen on the lawn, or planted in groups. Very rare tree today.

12-15 in., 5 yr. old -----\$ 7.50  
 15-18 in., 6 yr. old -----\$ 9.50



PSEUDOTSUGA FIR

DOUGLAS FIR      See Page 14 for description

# PINES

***Pinus mughus***

**Mugho Pine**

Dwarf. Many stems, spreading Pine. Suitable for use in foundation planting; low, compact habit.

12-15 in. -----\$ 3.50    15-18 in. ----- 5.00  
 18-24 in. -----\$ 6.50

***P. strobus, 60-80 ft.***

**White Pine**

A tall, straight, fast-growing, hardy tree with long, flexible, light green needles. Very graceful.

18-24 in. -----\$ 5.00    2-3 ft. ----- 6.00  
 3-4 ft. -----\$ 7.00



WHITE PINE

## YOU GET BEAUTY AND VIGOR IN "WILL GROW" EVERGREENS

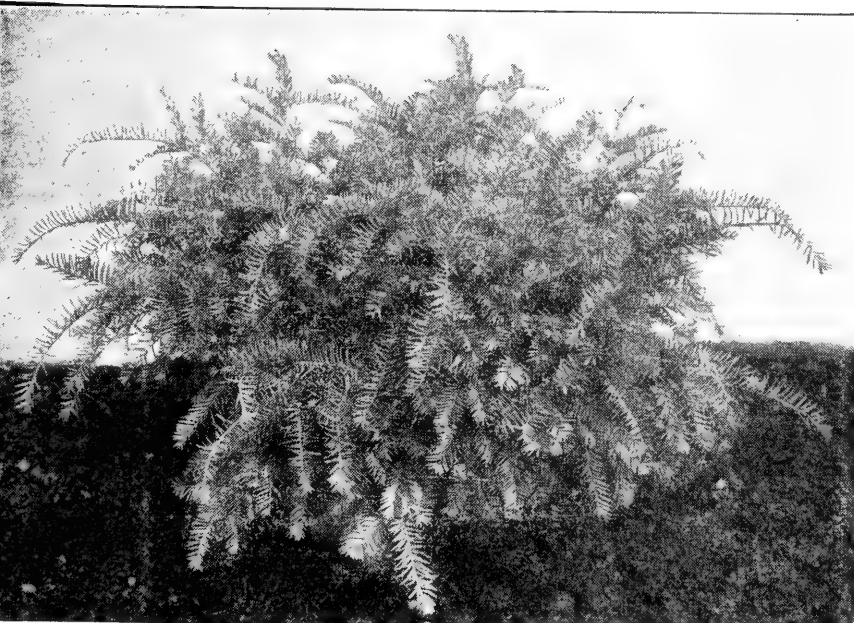
Barr's "Will Grow" Evergreens have a character all their own, due to our system of shaping, root-pruning and frequent transplanting, which results not only in a close, beautiful, compact growth so desirable in Evergreens, but aids in a quick recovery after transplanting.

Being hand-dug B-B (Balled & Burlapped) when your order is received all roots are carefully secured. Taken fresh from the ground is assurance that your Evergreens will have their full vitality and that you can count on them giving you the most satisfactory results.

# YEW S (Taxus)

## IMMUNE TO MOST INSECTS AND DISEASES

Adaptability to part shade, semi-dwarf habit, handsome, dark green foliage winter and summer, give the Yews their high value as Evergreens for foundation and other ornamental planting. Best evergreen family for difficult city conditions and foundation planting. Any planting can be greatly enriched by a liberal use of Yews. Many of the Yews produce a profusion of red berries during the Fall.



TAXUS CUSPIDATA Spreading Yew

***TAXUS baccata repandens, 4-5 ft.***

**Spreading English Yew**

Low gracefully spreading habit; long, glossy, blue-green foliage. Ideal as a low plant to face off groups. Thrives in shade.

10-12 in. spr. -----\$ 3.50  
 12-15 in. spr. ----- 4.50  
 15-18 in. spr. ----- 6.00  
 18-24 in. spr. ----- 8.00

***T. cuspidata, 8-12 ft.***

**Common Spreading Yew**

Most vigorous of the Yews; very hardy; dark, green foliage; excellent for foundation planting or hedges. Has a pleasing informal spreading habit. Lends itself well for group planting.

10-12 in. wide --\$ 3.00    1½-2 ft. wide --\$ 6.75  
 12-15 in. wide -- 4.25    2-2½ ft. wide -- 7.75  
 15-18 in. wide -- 5.50    2½-3 ft. wide -- 9.00  
 3-3½ ft. wide -----\$10.50

# Y E W S (Continued)

***T. c. capitata*, 15-20 ft. Upright Yew**

Symmetrical, upright and compact grower; foliage dark green; fruit, bright scarlet. Very hardy; invaluable for foundation planting. Makes a rich hedge.

15-18 in. high --\$ 5.00	2½-3 ft. high --\$ 9.00
1½-2 ft. high -- 6.00	3-3½ ft. high -- 10.50
2-2½ ft. high -- 7.50	3½-4 ft. high -- 12.00
4-5 ft. -----	\$15.00

***Taxus compacta nana*, 3-4 ft.**

Very dwarf, compact-growing variety — may be grown into a ball if desired, with very little pruning. Very hardy.

12-15 in. wide --\$ 4.50	15-18 in. wide --\$ 6.00
18-24 in. wide -----	\$ 8.00

***Taxus intermedia*, 4-5 ft. Hybrid Yew**

Improved Yew, spreading form, dense foliage, slow-growing, neat; a very desirable variety.

15-18 in. wide --\$ 6.00	18-24 in. wide --\$8.00
2-2½ ft. wide -----	\$10.00

***TAXUS m. moonii*, 6-8 ft. Upright Yew**

Upright, compact broad grower; dark green foliage, beautiful, hardy variety, slow growing.

15-18 in. high --\$ 5.25	2-2½ ft. high --\$ 8.50
18-24 in. high -- 7.50	2½-3 ft. high -- 10.00
3-4 ft. high -----	\$11.00



UPRIGHT YEW

***T. c. nana (brevifolia)*, 3-4 ft. Dwarf Yew**

Very handsome, slow growing, low, compact Evergreen, with short, rich, dark green needles. Splendid for foundation plantings. Unexcelled for permanence. Dwarf spreading habit.

9-12 in. wide --\$ 4.00	15-18 in. wide --\$ 8.00
12-15 in. wide -- 6.00	18-24 in. wide -- 10.50
2-2½ ft. wide -----	\$ 12.00

***T. media hatfieldi*, 6-8 ft. Hatfield Yew**

Compact, conical form, with upright branches, center full; very beautiful, hardy variety; rich black-green, darkest of all Yews.

15-18 in. high --\$ 5.50	2-2½ ft. high --\$ 9.00
18-24 in. high -- 7.50	2½-3 ft. high -- 10.00
3½-4 ft. high -----	\$12.00

***T. m. hicksi*, 8-12 ft. Hicks Yew**

Upright, narrow, conical form; dense, dark green foliage. Effective accent plant. Very attractive in Fall for its profusion of red berries.

15-18 in. high --\$ 4.00	2½-3 ft. high --\$ 9.00
1½-2 ft. high -- 6.00	3-3½ ft. high -- 10.00
2-2½ ft. high -- 7.50	3½-4 ft. high -- 12.00

***T. vermuelen*, 8-10 ft. Taxus Vermuelen**

Symmetrical, upright grower; compact; effective accent plant; very hardy. Unexcelled for foundation planting.

15-18 in. high --\$ 4.50	2½-3 ft. high --\$ 9.00
18-24 in. high -- 6.00	3-3½ ft. high -- 10.00
2-2½ ft. high -- 7.50	3½-4 ft. high -- 12.00

***Taxus browni*, 4-5 ft. Brown's Yew**

Broad, semi-upright growth, usually as wide as high; slow-growing, ball shape growth.

12-15 in. -----\$ 4.50	18-24 in. -----\$ 8.00
15-18 in. ----- 6.00	2-2½ ft. ----- 10.00

**GOVERNMENT CERTIFIED PLANTS FURNISHED**

Barr's "Will Grow" Plants are shipped anywhere under certificates from the U. S. Government and Penna. Dept. of Agriculture, showing them to have been thoroughly inspected and found free from insect pests and fungus diseases.

You are thus assured of receiving perfectly healthy, vigorous plants.

# ARBORVITAE

The clean, neat, compact appearance and soft foliage of the Arborvitae make them appropriate for foundation planting where they are almost indispensable for hedges, and for planting on small lawns as well as large areas. The Arborvitae are hardy and easy to transplant, but prefer moist soils. They offer a wide range of possibilities.

## *THUJA occidentalis*, 15-25 ft.

### American Arborvitae

Broad, conical tree; foliage bright green. Good for screens and hedges and accent purposes in evergreen plantings.

6-8 ft. ----- \$ 8.00

## *T. oc. elegantissima*, 15-20 ft.

### Lee Golden Arborvitae

Compact, pyramidal plant; golden green foliage; hardy and vigorous in growth. Its bright color will enliven any evergreen planting.

15-18 in. ----- \$ 2.25  
18-24 in. ----- 3.00  
2-2½ ft. ----- 4.00  
2½-3 ft. ----- 5.00  
3-4 ft. ----- 6.25

## *T. oc. globosa*, 3-4 ft.

### American Globe Arborvitae

Grows naturally in ball-like form; light green foliage. Very hardy. Use as a low type for variety in foundation plantings, or as accent plant for colonial type house on each side of entrance step.

12-15 in. ----- \$ 2.75    15-18 in. ----- \$ 4.00  
18-24 in. ----- \$ 5.00



PYRAMIDAL ARBORVITAE

## *T. oc. Hoveyi*, 4-6 ft.

Oval or Pear shape, nearly as broad as high. Bright green foliage, slow growing. Ideal where a dwarf plant is desired.

2½-3 ft. ----- \$ 5.00    3-4 ft. ----- \$ 7.00

## *T. oc. spiralis*, 10-15 ft.

### Moss Arborvitae

Dense, attractive, blue-green, pyramidal variety. Very beautiful crested, obtuse foliage.

3-4 ft. ----- \$ 6.25    4-5 ft. ----- \$ 8.00

## *T. oc. pyramidalis*, 15-25 ft.

### Pyramidal Arborvitae

Narrow columnar growth; denser and darker green than American Arborvitae. Most widely used tall, narrow type. Holds color well throughout year.

15-18 in. ----- \$ 2.25    2½-3 ft. ----- \$ 5.00  
1½-2 ft. ----- 3.00    3 -4 ft. ----- 6.25  
2-2½ ft. ----- 4.00    4 -5 ft. ----- 8.00

## *T. oc. wareana*, 10-15 ft.

### Ware (Siberian) Arborvitae

Broad conical type; dense, slow growing, of rugged appearance. Pleasant bluish-green foliage unchanged by Winter. Very hardy.

15-18 in. ----- \$ 2.50    2-2½ ft. ----- \$ 5.00  
1½-2 ft. ----- 3.50    2½-3 ft. ----- 6.50

## BIOTAS

Branchlets in vertical planes on slender, ascending branches from near the base.

## *T. orientalis—Biota aurea nana*, 2-3 ft.

### Dwarf Golden Oriental Arborvitae

Popular, low, conical plant; bright golden hue becoming bronze-tipped in winter. A spectacular living globe of gold and green.

12-15 in. ----- \$ 3.00    15-18 in. ----- \$ 4.00  
3-4 ft. ----- \$ 8.50

## *T. orientalis bakeri*, 6-8 ft.

### Baker Arborvitae

Pyramidal habit; rich green. Medium-fast compact grower.

2½-3 ft. ----- \$ 5.00    4-5 ft. ----- \$ 6.00

**Arborvitae Are Widely Used  
for Economical Foundation  
Plantings, Open Lawn Speci-  
mens, or Evergreen Hedges.**

# HEMLOCK (Tsuga)

## HEMLOCKS — A Leading Specialty at Barr's

The Hemlock with its graceful branches, and beautiful, neat, needle foliage can well be made the basis of many fine plantings. Its informality of outline is particularly pleasing. On the open lawn it makes a handsome specimen, but wherever planted it is never out of place. Will remain small many years if sheared regularly.

### TSUGA canadensis, 60-80 ft.

#### Canada Hemlock

The soft, feathery, dark green, fernlike foliage of the Canada Hemlock will give a softening touch to any planting, and combined with its gracefully spreading branches makes of it a magnificent tree. It is the State Tree of Pennsylvania. For specimen planting or in groups on the open lawn, or for hedges.

15-18 in. -----	\$ 3.50	2½-3 ft. -----	\$ 7.50
18-24 in. -----	5.00	3 -4 ft. -----	9.00
2-2½ ft. -----	6.00	4 -5 ft. -----	12.00
5-6 ft. -----	\$15.00		
6-8 ft. -----	\$20.00		

Larger sizes priced on application.



CANADIAN HEMLOCK  
State Tree of Pennsylvania

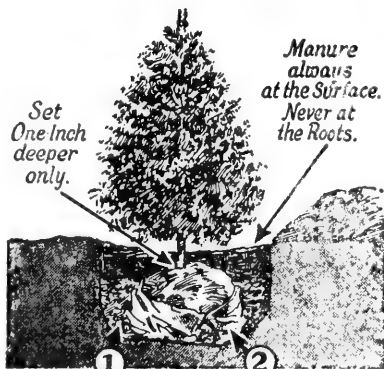
### When Building A New Home

It is advisable to budget 5 to 10 percent for landscaping. Real estate men agree an investment of 10 percent of the cost of the house in Evergreens, Trees, and Shrubs increases the value at least 15 percent and your enjoyment of your home to an immeasurable extent for many years to come.

At the very beginning of operations put aside the amount you propose spending for landscaping. Without good landscaping a house gives the appearance of "something wanting," or not being finished.

We shall be pleased to furnish estimates and sketches on contemplated plantings without cost. Our 64 years experience is yours for the asking.

## When and How to Plant Evergreens



Set One Inch deeper only.

Manure always at the Surface. Never at the Roots.

1 Pack loose soil around Ball Tramp firmly.

2 Cut Burlap and push it down. Leave it to decay.

3 Then water and fill in remaining soil.

Dig hole 6 inches larger and deeper than ball of earth.

Evergreens transplant best during the Spring months, before and just as new growth is beginning, or for several months following August 15 when the new growth is completed and has become sufficiently hardened.

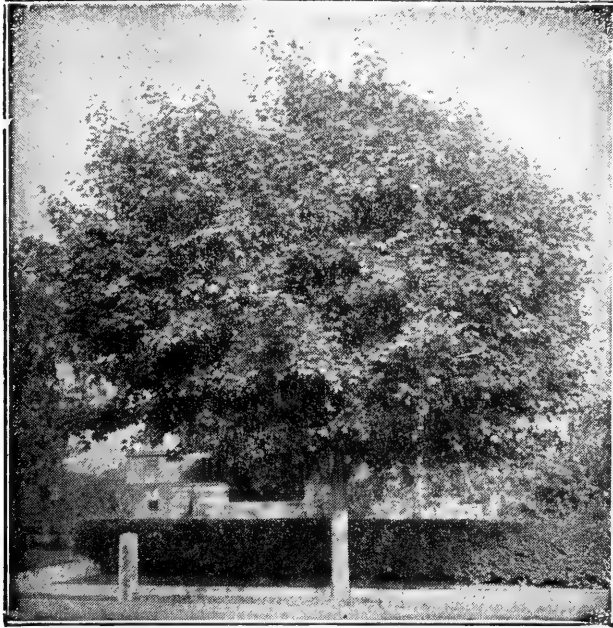
The excavation for planting should be considerably larger and deeper than the encased roots so as to allow liberal space around the ball for filling in with rich soil. Do not remove burlap, only loosen it at top and roll back as indicated in illustration. Carefully pack soil under earth ball. Tamp back-fill firmly until hole is half-refilled, FLOOD WITH WATER. Mix 10% Peat Moss in the soil used for back fill, and ¼ lb. Vigoro, or Agrico on the surface after planting, never at the roots.

In restoring the remainder of the excavated soil allow a shallow basin to remain around the tree to collect the rain and enable it to soak into the ground. Mulch with well-rotted manure or Peat Moss to conserve the moisture in the ground and keep it from becoming hard. In the Fall mound the soil against the plants.

Nightly spray the foliage, water soil weekly and direct a STRONG force of water against the under side of the foliage, when the sun is not shining. This treatment preserves the vigor and beauty of the plant.

# SHADE AND FLOWERING TREES

Figures following names indicate approximate height at maturity. "CAL." means thickness of trunk 4 to 12 inches from ground. All trees are dug bare rooted, unless noted "B&B", balled and burlapped. Figures following names or description refers to ultimate height. For best results, it is to your advantage to plant B&B trees where indicated at the small added cost.



NORWAY MAPLE

## Acer—MAPLES

Maples are widely used for street and lawn planting, being one of the best shade trees known. Their great popularity is evidence of their reliability.

**Acer platanoides, 50-75 ft. Norway Maple**  
 Handsome, round-headed tree with broad, smooth, deep green leaves, holding color till late in Fall, when they turn attractively golden.

- 6-8 ft. branched .....\$ 6.75
- 6-8 ft. ht. 1-1 1/4 in. cal. .... 8.89
- 9-10 ft. ht. 1 1/4-1 1/2 in. cal. .... 10.80
- 10-12 ft. ht. 1 1/2-1 3/4 in. cal. .... 13.89
- 12-14 ft. ht. 1 3/4-2 in. cal. .... 18.89
- 12-14 ft. ht. 2-2 1/4 in. cal. .... 23.80
- 12-14 ft. ht. 2 1/4-2 1/2 in. cal. \$31.00 B&B

add \$ 11.00

**A. rubra, 40-60 ft. Red Maple**  
 Small dense growing tree with small green foliage during summer, changing to brilliant red in fall. Red buds in spring and prefers moist soil.

- 6-8 ft. ht., 1-1 1/4 in. cal. .... 9.80
- 8-10 ft. ht. 1 1/4-1 1/2 in. cal. .... 12.00
- 10-12 ft. ht. 1 1/2-1 3/4 in. cal. .... 15.30
- 12-14 ft. ht. 1 3/4-2 in. cal. \$20.80, B&B add \$7.50
- 12-14 ft. ht. 2-2 1/4 in. cal. \$26.50, B&B add 9.00
- 12-14 ft. ht. 2 1/4-2 1/2 in. cal. \$34.50, B&B add 11.00

**A. saccharum, 40-60 ft. Sugar Maple**  
 Handsome tree, upright and dense in growth; large leaves, assuming beautiful yellow or scarlet in fall. Best maple for street planting; higher headed and straighter in trunk than Norway Maple.

- 5-6 ft. ht. ....\$ 7.50
- 7-8 ft. ht. 1-1 1/4 in. cal. .... 9.80
- 8-9 ft. ht. 1 1/4-1 1/2 in. cal. .... 12.00
- 10-12 ft. ht. 1 1/2-1 3/4 in. cal. .... 15.30
- 14-16 ft. ht. 1 3/4-2 in. cal. \$20.80, B&B add \$7.50
- 14-16 ft. ht. 2-2 1/4 in. cal. 26.50, B&B add 9.00
- 14-16 ft. ht. 2 1/4-2 1/2 in. cal. 34.50, B&B add 11.00

**A. P. schwedleri nigra Crimson King**  
 New improved Schwedler; it carries very attractive purple-red leaves all season; very hardy.

- 6-8 ft. transplants .....\$ 8.00
- 6-8 ft. 3/4-1 in. cal., slightly branched .... 10.00
- 6-8 ft. 1-1 1/4 in. cal., branched ..... 18.00
- 8-10 ft. 1 1/4-1 1/2 in. cal., branched ..... 23.00

## JAPANESE RED MAPLE

**A. atropurpureum, 10-15 ft. Bloodleaf Maple**  
 Leaves star-shaped, blood red until early summer, changing to dull red, in autumn assuming striking tints of red.

- 12-15 in. B&B..\$ 7.50
- 18-24 in. B&B..\$13.00
- 15-18 in. B&B.. 10.00
- 2-2 1/2 ft. B&B.. 15.00

## Betula—BIRCH

**Betula alba, 30-40 ft. European White Birch**  
 Highly colored, silvery white bark; small triangular leaves.

- 8-10 ft. high B&B .....\$ 16.00
- 2-2 1/2 in. cal. ....\$ 25.00

**B.a. laciniata, 30-40 ft. Cut-Leaf Weeping Birch**  
 Lacy, weeping habit.

- 6-8 ft. high .....\$ 8.00
- 8-10 ft. high B&B ..... 16.00

**B. papyrifera, 40-50 ft. Canoe Birch**  
 Papery bark, heart shaped leaves, dull beneath and dark green above, Spreading habit.

- 8-10 ft. B&B .....\$ 16.00

## Cercis—REDBUD

**Cercis canadensis, 12-15 ft. Redbud (Judas Tree)**  
 Rosy pink flowers in April.

- 3-4 ft. ....\$ 3.00
- 4-5 ft. B&B .....\$ 5.00
- 6-7 ft. B&B .....\$ 12.00

## Cornus—DOGWOODS

One of the best small ornamental trees for lawn decoration; pretty in border with Evergreens, or in masses. Showy spring flowers, followed by bright-red berries and beautiful autumn foliage display.

**Cornus florida, 12-20 ft. White Dogwood**  
 Showy white flowers before leaves appear.

- 2-3 ft. B&B ...\$ 4.00
- 4-5 ft. B&B ...\$10.00
- 3-4 ft. B&B ... 6.00
- 5-6 ft. B&B ... 15.00

**C. f. rubra, 12-18 ft. Red Dogwood**  
 Red flowering, very impressive sight.

- 2-3 ft. B&B ...\$ 6.00
- 4-5 ft. B&B ...\$14.50
- 3-4 ft. B&B ... 9.50
- 5-6 ft. B&B ... 20.00
- 6-8 ft. B&B .....\$ 25.00

**C. mas, 12-18 ft. Cornelian Cherry**  
 Showy, small tree with profuse, small, delicately scented, yellow flowers before the leaves. Large, cherry-red edible fruits in August.

- 3-4 ft. ....\$ 3.00
- 4-5 ft. ....\$ 5.00
- 6-8 ft. ....\$ 7.50

**C. Kousa, 12-15 ft. Kousa Dogwood**

- Bears white flowers in June. Bright green foliage, Scarlet berries in fall. Attractive to birds.
- 3-4 ft. B&B ...\$ 8.00
  - 5-6 ft. B&B ...\$14.00
  - 6-8 ft. B&B .....\$18.00

## Crataegus—HAWTHORNS

**C. cordata, 12-16 ft. Washington Thorn**  
 Brilliant Autumn foliage; white flowers, bright red fruit in fall and winter.

- 5-6 ft. ....\$ 8.00
- 7-9 ft. B&B .....\$20.00

**C. Pauli 12-15 ft. Pauls Scarlet**  
 Showy; numerous large, clusters, scarlet-crimson flowers, in June.

- 6-8 ft. B. B. ....\$ 10.00



**LIQUIDAMBER, SWEET GUM**  
**Fraxinus—WHITE ASH**

**Fraxinus americana**, 60-70 ft. **White Ash**  
Rapid-growing, open, broad-headed tree; straight, clean trunk; smooth gray bark.  
8-10 ft. high 1¼-1½ in. cal. ....\$ 10.00  
10-12, 1¾-2 in. cal. ....\$ 14.00

**Gleditsia—MORAINÉ LOCUST**

**G. t. inermis "Moraine"**. Plant Patent No. 836  
A new vase form, thornless, seedless and hardy tree—resistant to disease.  
8-9 ft. high, branched .....\$ 10.00

**Gleditsia "Sunburst"**  
8-10 ft. high .....\$ 12.00

**Laburnum—GOLDENCHAIN**

**Laburnum vossii**, 20-30 ft. **Goldenchain**  
Dark green leaves falling late in Autumn; long graceful chains of bright yellow. Wisteria-like flowers late Spring. Hardier than the old type **L. vulgare**.  
5-6 ft. high B&B .....\$ 9.00  
8-10 ft. high, B&B .....\$ 15.00

**Liquidamber—SWEET GUM**

Leaves star-shaped and glossy, changing to brilliant crimson in Fall making it an outstanding tree. Tall, pyramidal type, with interesting, corky bark.

**Liquidamber styraciflua**, 50-70 ft. **Sweet Gum**  
5-6 ft., ¾-1 in. cal. B&B .....\$ 9.00  
6-8 ft., 1-1¼ in. cal. B&B ..... 11.30  
8-10 ft., 1¼-1½ in. cal. B&B ..... 16.00  
8-10 ft., 1½-1¾ in. cal. B&B ..... 21.55  
9-12 ft., 1¾-2 in. cal. B&B ..... 28.30  
10-12 ft., 2-2¼ in. cal. B&B ..... 36.40

**Liriodendron—TULIP TREE**

**Liriodendron tulipifera** 40-60 ft. **Tulip Tree**  
Yellow flower—June.  
10-12 ft. 1¼-1½ in. cal. B&B .....\$ 15.00  
10-12 ft. 1¾-2 in. cal. B&B ..... 20.00  
10-12 ft. 2-2½ in. cal. B&B ..... 25.00

**Magnolia—MAGNOLIAS**

The Magnolias are small trees that give distinction to any lawn, being especially beautiful in foliage and in the large flowers.

**Magnolia glauca**, 15-20 ft. **Sweet Bay**  
Creamy white flowers in May.  
2-3 ft. B&B ...\$ 7.00 3-4 ft. B&B ...\$ 9.00

**M. soulangeana**, 12-18 ft. **Saucer Magnolia**  
Pink blooms, blush white inside flower.  
2-3 ft. B&B ...\$ 7.00 3-4 ft. B&B ...\$ 9.00  
4-5 ft. B&B .....\$12.00

**M. rustica rubra** **Purple red**  
Late flowering. One of the finest magnolias.  
2-3 ft., B&B ..\$ 8.00 3-4 ft., B&B ..\$ 10.00

**M. stellata**, 6-8 ft. **Star Magnolia**  
Pure white star-shaped fragrant flowers; dwarf grower.  
2½-3 ft., B&B ..\$12.00 3-4 ft., B&B ..\$14.00

**Malus—FLOWERING CRABS**

The Flowering Crab is a most charming spring flowering tree and worthy of a place on every lawn. Ultimate height 10-12 ft.

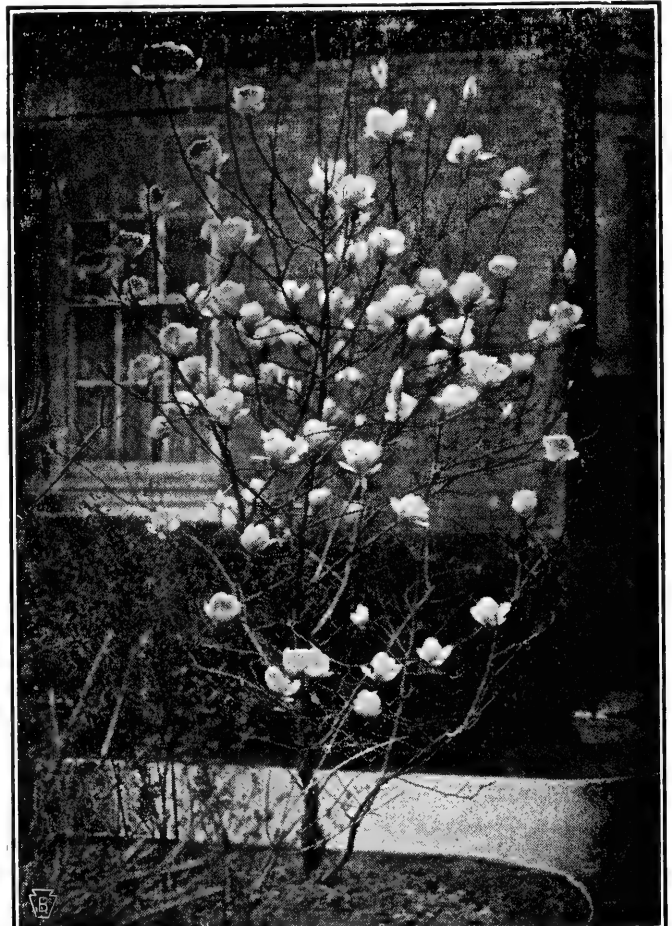
**M. almey** **Red Flowering Crab**  
A beautiful new introduction. Red flowers and fruit. Red-toned leaves.  
6-8 ft. ....\$ 7.00

**Malus arnoldiana** **Arnold Crab**  
White flowers in profusion.  
5-6 ft. ....\$ 4.75 6-8 ft. ....\$ 6.00

**M. atrosanguinea** **Carmine Crab**  
Rich, fadeless, deep carmine, single flowers in great profusion.  
6-8 ft. ....\$ 6.00

**M. floribunda** **Pink Flowering Crab**  
Produce rose-colored, single flowers, appearing early with the foliage; golden yellow fruit in the Fall.  
5-6 ft. ....\$ 4.75 6-8 ft. ....\$ 6.00

**M. hoppi** **Red Flowering Crab**  
Foliage, flowers, fruit, bark, all red-toned color, giving a pleasing effect and contrast with green-foliaged trees and shrubbery.  
5-6 ft. ....\$ 5.00 6-8 ft. ....\$ 6.00



MAGNOLIA SOULANGEANA



- M. niedzwetzkyana** **Redvein Crab**  
Red blossoms with very large red fruit in fall.  
5-6 ft. ....\$ 4.75    6-8 ft. ....\$ 6.00
- M. i. plena** **Bechtel Crab**  
Large double, fragrant flowers, delicate shell-pink resembling small roses, blooms after other varieties of crab-apples.  
4-5 ft. ....\$ 6.00
- M. scheideckeri** **Scheidecker Crab**  
Double red buds changing to pink. Yellow fruits in fall.  
4-5 ft. ....\$ 4.75    6-8 ft. ....\$ 6.00
- M. spectabilis** **Chinese Flowering Crab**  
Fragrant semi-double delicate pink flowers and small yellow fruits in Fall.  
6-8 ft. ....\$ 6.50

**MIMOSA**

- Mimosa Tree** **albizzia julibrissin**  
5-6 ft. potted .....\$ 5.00

**OKYDENDRON—SOURWOOD**

- Oxydendron arboreum, 25-30 ft.** **Sourwood**  
White flowers in August. Leathery foliage. Striking autumn coloring.  
8-10 ft. B&B .....\$ 15.00

**Platanus—ORIENTAL PLANE**

One of the best fast growing shade trees for City and rural development planting.

- Platanus orientalis, 50-60 ft.** **European Plane**  
5-6 ft. branched .....\$ 5.00  
6-8 ft., 1-1¼ in. cal. .... 7.50  
8-10 ft., 1¼-1½ in. cal. .... 10.00  
10-12 ft., 1½-1¾ in. cal. .... 14.00  
10-12 ft., 1¾-2 in. cal. .... 16.00  
12-14 ft., 2-2½ in. cal. .... 22.00

**Prunus—JAPANESE CHERRIES**

Highly ornamental, low-growing, picturesque trees of exquisite color and fragrance flowering early June.

- Prunus ser. Kwansan** **Rose Pink Cherry**  
One of the finest of the Flowering Cherries, with double, rose-pink flowers: 20-25 ft.  
5-6 ft. B&B ...\$ 8.00    6-8 ft. B&B ...\$11.00  
5-6 ft. ....\$ 6.00    6-8 ft. ....\$ 9.00
- P. ser. naden** **Light Pink Cherry**  
Large, double, soft-pink flowers; a fine companion to Kwansan: 20-25 ft.  
5-6 ft. B&B ...\$ 8.00    6-8 ft. B&B ...\$ 11.00
- P. sub. pendula** **Weeping Cherry**  
Clothed in early May with a profusion of single pink flowers in clusters on drooping branches almost touching the ground; a picturesque tree in flower and out of flower: 20-25 ft.  
5-6 ft. stems, 2 yr. heads .....\$ 13.00
- P. thundercloud** **Purple Plum**  
Purple foliage all summer.  
6-8 ft. ....\$ 7.00

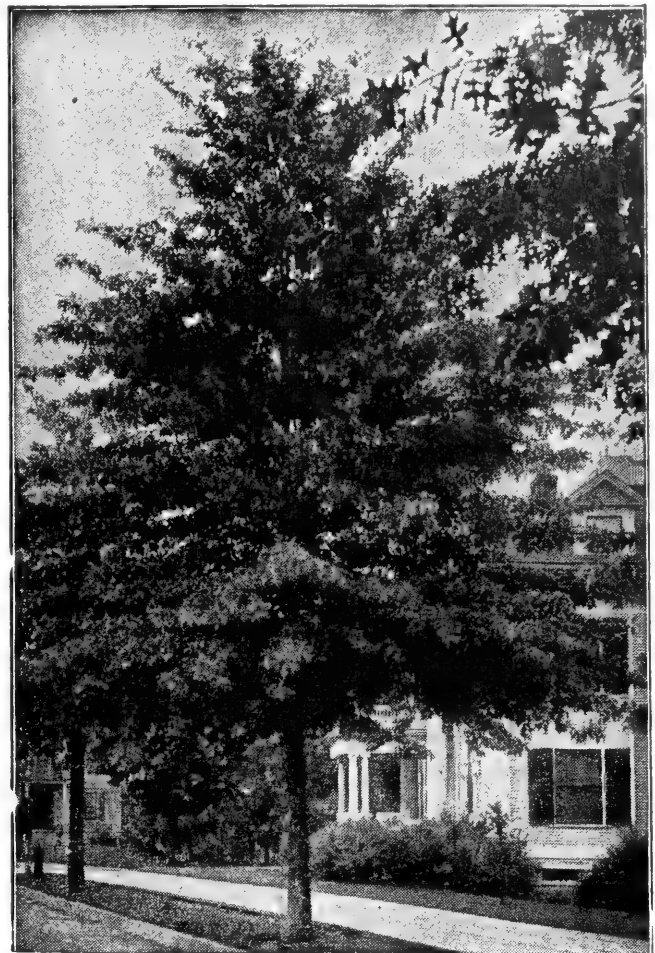
**Quercus—OAKS**

Majestic trees, strongly formed and with beautiful foliage, particularly handsome in the autumn. Rank as outstanding trees for lawn and street planting.

- Quercus coccinea, 70-90 ft.** **Scarlet Oak**  
6-7 ft. branched .....\$ 8.50  
8-10 ft., 1-1¼ in. cal. .... 11.00  
9-10 ft., 1¼-1½ in. cal. .... 15.00  
10-12 ft., 1½-1¾ in. cal. .... 19.50  
10-12 ft. 1¾-2 in. cal. \$23.50—B&B add \$7.50  
Larger sizes priced on application.
- Q. palustris, 40-60 ft.** **Pin Oak**  
6-7 ft. branched .....\$ 8.50  
8-10 ft., 1-1¼ in. cal. .... 9.80  
8-10 ft., 1¼-1½ in. cal. .... 12.00  
9-12 ft., 1½-1¾ in. cal. .... 15.30  
11-13 ft., 1¾-2 in. cal. \$20.80, B&B add \$ 7.50  
12-14 ft., 2-2¼ in. cal. 26.50, B&B add 9.00  
12-14 ft., 2¼-2½ in. cal. 34.50, B&B add 11.50  
Larger sizes priced on application.
- Q. rubra, 50-75 ft.** **Red Oak**  
6-7 ft., branched .....\$ 8.00  
8-10 ft., 1-1¼ in. cal. .... 10.00  
10-11 ft., 1¼-1½ in. cal. .... 13.00  
11-12 ft., 1½-1¾ in. cal. .... 17.50  
11-12 ft., 1¾-2 in. cal. \$21.00—B&B add \$7.50  
12-14 ft., 2-2¼ in. cal. \$26.50—B&B add \$9.00  
Larger sizes priced on application.

**Salix—WILLOW**

- S. salamoni babylonica, 30-40 ft.** **Weeping Willow**  
8-10 ft. high, 1¼-1½ in. cal. ....\$ 6.00



PIN OAK

**MOUNTAIN ASH**

- Sorbus aucuparia** **Mountain Ash**  
Attractive white flowers in May, followed by showy clusters of bright red berries in the Fall: 18-24 ft.  
6-8 ft. ....\$ 6.00    8-9 ft. ....\$ 9.00

**Tilia—LINDENS**

- Tilia americana, 60-80 ft.** **American Linden**  
Rapid-growing tree with large, glossy leaves and fragrant yellow flowers in June.  
8-10 ft., ¾-1 in. ....\$ 9.00  
10-12 ft., 1¼-1½ in. cal. .... 13.00
- T. cordata, 50-60 ft.** **European Linden**  
Dense and compact-growing tree—small, dark green leaves.  
8-10 ft., 1¼-1½ in. cal. ....\$ 16.00

**BALL and BURLAP CHARGES**

When it is desired to have Trees or Shrubs balled and burlapped (B. & B.) There will be an extra charge for this additional treatment unless quoted as B. & B. This charge will be in conformity with the following schedule:

Size and Caliper of tree	Size of Ball	Price
5-6 ft. branched	15 in.	\$ 1.75
6-8 ft. 1-1¼ in. cal.	16 in.	2.50
8-9 ft. 1¼-1½ in. cal.	20 in.	4.00
9-11 ft. 1½-1¾ in. cal.	22 in.	6.25
11-12 ft. 1¾-2 in. cal.	24 in.	7.50
12-14 ft. 2-2¼ in. cal.	25 in.	9.00
12-16 ft. 2¼-2½ in. cal.	27 in.	11.50
14-18 ft. 2½-2¾ in. cal.	30 in.	13.25
<b>Shrubs</b>		
18-24 in. ....\$ .50	3-4 ft. ....\$ 1.00	
2- 3 ft. .... .75	4-5 ft. .... 1.50	

**BLIGHT-RESISTANT CHINESE CHESTNUTS**

Memories of childhood days, luscious brown chestnuts can again be yours from the trees you plant this Spring. You can have chestnuts in two years after planting.  
Plant two or more for pollination.  
5-6 ft. ....\$ 4.00    6-8 ft. ....\$ 6.00

# Beautiful Broad-Leaved Evergreen Shrubs

These splendid plants hold their bright green foliage all the year round and many varieties make a magnificent showing of bloom. Shaded situations are preferred by most of the varieties.

**SHIPPING ORDERS.** Please add 15% to catalogue price to help defray crating cost. Delivery not prepaid.

**How To Treat The Soil For Azaleas Holly and Rhododendrons**  
 Rhododendrons and Azaleas require an acid soil. For best results, plant in a mixture of 50 per cent leaf mould or Holland Peat 50 per cent. In limestone localities ½ pound aluminum sulphate or Broadleaf fertilizer to each square yard of surface broadcast Spring and Fall, will prove beneficial in acidifying the soil.

## ABELIA

**ABELIA grandiflora, 3-4 ft.**  
 Glossy Abelia or Bush Arbutus

Graceful, arching branches; shining, dark green leaves; dainty, waxy, pinkish-white, fragrant flowers from June to November. Very attractive in foreground of foundation plantings; or for hedges.  
 15-18 in. B&B ---\$ 2.75    18-24 in. B&B ---\$ 3.75

## AZALEAS

Few flowering plants can excel the Azaleas for all around usefulness. They make a most brilliant color display, either singly or in groups, doing well among other evergreens.

**A. Amoena, 3-4 ft.**  
 Bright, purple-red, double flowers; the hardiest variety in the Evergreen Azaleas.  
 12-15 in. B&B ---\$ 4.50    15-18 in. B&B ---\$ 6.00

**A. hinodegiri, 3-4 ft.**  
**Crimson Evergreen Azalea**  
 Bright red, double flowers; very showy.  
 8-10 in. B&B ---\$ 3.00    12-15 in. B&B ---\$ 5.00  
 10-12 in. B&B --- 4.00    15-18 in. B&B --- 6.00  
 18-21 in. B&B ----- \$ 8.00

**A. Rosebud (Gable Type)**  
 Many double tight miniature pink blooms practically covering the plant.  
 8-10 in. B&B ----- \$ 3.25

**A. Indica Alba (white)**  
 15-18 in. B&B ----- \$ 6.50

See *Azalea calendulacea*, Page 26

**Berberis julianne**                      **Evergreen Barberry**  
 Medium growth. Broad-spined, glossy foliage, yellow flowers in the Spring. Excellent for foundation planting; 3-4 ft.  
 12-15 in. B&B ----- \$ 4.00

## BOXWOODS

**BUXUS suffruticosa, 3-4 ft.**  
 Dwarf English Box

Especially adapted to edging walks or as low hedge. This is the attractive variety growing in the formal gardens at Washington's home, Mt. Vernon.

	10	100
6-8 in. -----	\$12.00	\$ 90.00
8-10 in. B&B, \$2.50 ea., -----	\$20.00	

## COTONEASTERS

**COTONEASTER horizontalis, 1-1½ ft.**  
 Rock Cotoneaster

Small, pink flowers; ornamental bright red fruit; shiny, green leaves; semi-evergreen.  
 10-12 in. B&B ---\$ 3.50    15 in. B&B ---\$ 4.00

## EUONYMUS

**EUONYMUS patens (sieboldianus), 6-7 ft.**  
 Handsome, large, dark green foliage; white flowers July; red berries in Fall.  
 18-24 in. B&B ----- \$ 5.50

**E. r. vegetus, 3-4 ft. Bigleaf Wintercreeper**  
 (Evergreen Bittersweet). Bushy growth, bright scarlet fruits. Will climb, or grow as bush.  
 9-12 in., 2 yr. plants ----- \$ 1.50

**E. r. colorato. Purpleleaved Wintercreeper**  
 2 yr. plants ----- \$ .75



AMERICAN HOLLY See description next page  
 EVERGREEN GROUND COVERS

**HOLLIES****ILEX opaca, 10-12 ft. American Holly**

For berries in abundance one must plant both male and the female type, as it's only the female that produce berries. Hollies love a slightly acid and well enriched soil.

**FEMALE BERRY-BEARING, B. & B.**

18-24 in. -----	\$ 6.00	30-36 in. -----	\$11.00
24-30 in. -----	7.00	3- 4 ft. -----	14.00
4-5 ft. -----	\$18.00		

**NON-BEARING, (Male Trees), B. & B.**

24-30 in. -----	\$ 7.00	30-36 in. -----	\$11.00
5-6 ft. -----	\$ 28.00		

**ILEX crenata 6-8 ft. Japanese Holly**

Deep green, boxlike leaves. Black berries. Unusually attractive in foundation planting. Compact upright habit and slow growing.

12-15 in. B&B---	\$ 3.00	2-2½ ft. B&B---	\$ 8.00
15-18 in. B&B---	4.00	2½-3 ft. B&B---	10.00
18-24 in. B&B---	6.00	3- 4 ft. B&B---	12.00

**I. c. Rotundifolia, 5 ft.****Roundleaf Japanese Holly**

Large round leaf holly, close growing, very compact habit.

12-15 in. B&B ---	\$ 4.50	15-18 in. B&B---	\$ 5.50
18-24 in. B&B -----	\$ 7.00		

**I. Green Island, 3 ft.**

Low growing compact habit for sun or shade.

12-15 in. B&B---	\$ 5.00	15-18 in. B&B---	\$ 6.50
18-24 in. B&B -----	\$ 8.50		

**I. c. convexa (bullatum), 3-4 ft. Boxleaf Holly**

Exquisite, dwarf, spreading Evergreen Shrub with small, box-like, convex, glossy, persistent leaves. Small, black berries, remaining over Winter. Especially suitable for foundation planting in sun or shade.

10-12 in. B&B---	\$ 3.50	15-18 in. B&B---	\$ 6.00
12-15 in. B&B---	5.00	18-24 in. B&B---	8.00

**I. Stokes Japanese Holly**

A very dwarf slow growing holly. Hardy.

12-15 in. wide --	\$ 4.50	15-18 in. wide --	\$ 5.50
-------------------	---------	-------------------	---------

**LAUREL****KALMIA latifolia, 4-8 ft. Mountain Laurel**

(The Pennsylvania State Flower)

Bright, dark-green leaves; large showy clusters of rose-colored flowers. One of the most beautiful, most popular and most useful of native, woody plants.

15-18 in. B&B---	\$ 5.00	18-24 in. B&B---	\$ 6.00
2-3 ft. B&B -----	\$ 7.50		

**LEUCOTHOE****LEUCOTHOE Axillaris, 3-4 ft.****Drooping Leucothoe**

Attractive, fragrant, white flowers in May, borne in long, pendulous racemes.

12-15 in. B&B -----	\$ 4.50
---------------------	---------

**ANDROMEDA****PIERIS japonica, 3-5 ft. Andromeda**

Bears graceful pendants of white flowers in early Spring. Glossy bright green foliage, especially attractive in Winter when bronze. Almost the ideal dwarf shrub without a flaw.

12-15 in. B&B---	\$ 5.00	15-18 in. B&B---	\$ 6.00
18-24 in. B&B -----	\$ 8.00		

**EVERGREEN GROUND COVERS**

For shady places. Pachysandra. (Spurge). English Ivy. Periwinkle. (Myrtle). See page 31.

**FIRETHORN****PYRACANTHA coccinea lalandi, 6-8 ft.****Laland Firethorn**

Glossy foliage; white flowers, followed by large clusters of orange berries; very ornamental.

15-18 in. potted plants -----	\$ 3.00
18-24 in. potted plants -----	4.50
2-2½ ft. potted plants -----	5.50

**P. coccinea Red Berries**

18-24 in. potted -----	\$ 4.50
2-2½ ft. potted -----	\$ 6.00

**P. rodgersiana Red Berries**

18-24 in. potted -----	\$ 4.50
2-2½ ft. potted -----	\$ 6.00

**RHODODENDRONS**

The Rhododendron is a very effective plant used in masses or groups or near dark foliage evergreens. It is excellent for the difficult shaded corner or the north side of the house. The Hybrid and Carolina varieties will thrive in full sunshine or shade.

**Hybrid Rhododendron**

Handsome of the Rhododendrons, the flowers being larger and of a brighter, clearer color.

**NAMED HYBRIDS****ALL CHOICE HARDY VARIETIES**

Balled & Burlapped

**CATAWBIENSE ALBA—WHITE**

15-18 in. -----	\$ 7.50	18-24 in. -----	\$10.00
-----------------	---------	-----------------	---------

**CATAWBIENSE BOURSALT—VIOLET-PINK**

15-18 in. -----	\$ 7.50	18-24 in. -----	\$10.00
-----------------	---------	-----------------	---------

**CHARLES BAGLEY—CHERRY-RED**

15-18 in. -----	\$ 8.00	18-24 in. -----	\$11.00
-----------------	---------	-----------------	---------

**DR. DRESSELHUYS—CRIMSON**

15-18 in. -----	\$ 8.00	18-24 in. -----	\$11.00
-----------------	---------	-----------------	---------

**EVERESTIANUM—PINK**

15-18 in. -----	\$ 8.00	18-24 in. -----	\$10.00
-----------------	---------	-----------------	---------

**24-30 in. -----****IGNATIUS SARGENT—LIGHT RED**

15-18 in. -----	\$ 7.50	18-24 in. -----	\$10.00
-----------------	---------	-----------------	---------

**24-30 in. -----****MRS. C. S. SARGENT—PINK**

15-18 in. -----	\$ 7.50	18-24 in. -----	\$10.00
-----------------	---------	-----------------	---------

**24-30 in. -----****PARSONS GLORIOSUM—PINK**

15-18 in. -----	\$ 8.00	24-30 in. -----	\$13.00
-----------------	---------	-----------------	---------

18-24 in. -----	10.00	30-36 in. -----	15.00
-----------------	-------	-----------------	-------

**ROSEUM ELEGANS—LAVENDER, PINK**

15-18 in. -----	\$ 7.00	18-24 in. -----	\$ 9.00
-----------------	---------	-----------------	---------

**VANDER HOOP, RED**

15-18 in. -----	\$ 8.00	24-30 in. -----	\$13.00
-----------------	---------	-----------------	---------

18-24 in. -----	11.00	30-36 in. -----	15.00
-----------------	-------	-----------------	-------

**RHODODENDRON carolinianum, 4-5 ft.****Carolina Rhododendron**

Light rose flowers in early May. Foliage is relatively small and plant is broad and compact. Tolerates sunshine.

15-18 in., B&B -----	\$ 5.00
----------------------	---------

18-24 in., B&B -----	7.00
----------------------	------

2½-3 ft., B&B -----	9.00
---------------------	------

**R. catawbiense Catawbiense Rhododendron****Nursery Grown**

Rosy-purple flowers in May and June. Acid soil is of course necessary for all Rhododendrons.

15-18 in. B&B---	\$ 5.00	18-24 in. B&B---	\$ 7.00
------------------	---------	------------------	---------

2-2½ ft. B&B -----	\$ 9.00
--------------------	---------

**R. maximum, 6-10 ft. Rosebay Rhododendron****Nursery Grown Plants.**

Flowers pale rose to nearly white. July. Good for mass planting.

18-24 in. clumps, B&B -----	\$ 5.50
-----------------------------	---------

2-2½ ft. clumps, B&B -----	7.00
----------------------------	------

2½-3 ft. clumps, B&B -----	8.50
----------------------------	------

3-4 ft. clumps, B&B -----	10.00
---------------------------	-------

**Viburnum Rhytidophyllum**

Evergreen Viburnum.

2-2½ ft. B&B ---	\$7.25	2½-3 ft. B&B ---	\$9.00
------------------	--------	------------------	--------

# Barr's Hardy Ornamental Shrubs

The hardy shrubs offer a constant change of scene that is always pleasing.

They may be used in many ways to beautify the lawn and garden where permanent plants are desired.

With very little attention they will grow and flower in their new location for years. By planting assorted varieties a succession of flowers may be had all summer.

- Aronia arbutifolia, 3-4 ft. Red Chokeberry**  
Attractive dwarf shrub with white flowers and red fruits, brilliant autumn foliage.  
2-3 ft. ----- \$ 1.50

## AZALEAS

### AZALEA *calendulacea*, 4-5 ft.

#### Flame Azalea

Brilliant flowers about two inches across in flaming colors ranging from salmon to golden orange, appearing early Spring. Most beautiful.

- 15-18 in. ----- \$ 4.00    18-24 in. ----- \$ 5.50  
2-3 ft. ----- \$ 7.00

### A. Ghent

#### Hybrids

Most unusual colors found in azaleas. Named varieties.

- 15-18 in. ----- \$ 5.00

## BUTTERFLY BUSHES

### BUDDLEIA "*Charming*", 5-6 ft.

#### Pink

Lovely long sprays of lavender-pink blooms, which compared with other Buddleias are distinctly pink. 2 yr. field grown plants.

### B. *hartwegi*, 5-6 ft.

#### Lavender

A Buddleia of superior hardiness. Large, bright, lavender flowers.

### B. *Ille de France*, 5-6 ft.

#### Purple

New variety with greater brilliance of color.

### B. *Royal Red*.

#### Royal Red

New variety, dazzling red; shaded purple.

### B. *White Bouquet*

#### White

A beautiful addition to the Butterfly family.

- \$1.00 each. 3 Plants, your selection, \$2.70

### CALLICARPA *purpurea*, 3-4 ft.

#### Chinese Beauty Fruit

Valued for lilac-violet berries which crowd branches after leaves have fallen when this is a very unusual and attractive shrub.

- 18-24 in. ----- \$ 1.25    2-3 ft. ----- \$ 1.50

### CALYCANTHUS *floridus*, 4-5 ft.

#### Sweetshrub or Strawberry Shrub

Reddish-brown, heavily scented flowers, spring and summer.

- 18-24 in. ----- \$ 1.35    2-3 ft. ----- \$ 1.50

### *Cercis chinensis*

#### Chinese Red-bud

Dwarf compact shrub. Deeper color than the tree form, Judas Tree Canadensis, a must in every collection of shrubs, April flowering.

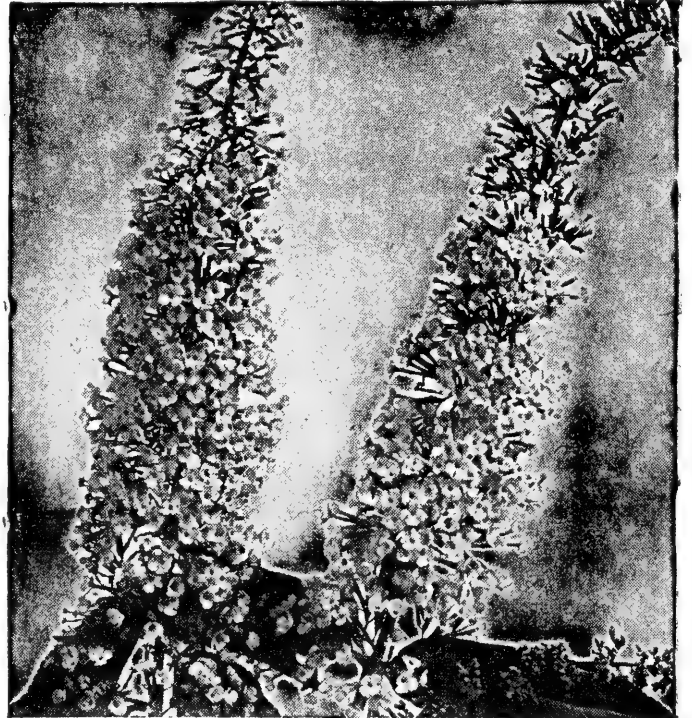
- 2-3 ft. ----- \$ 2.00

### CLETHRA *alnifolia*, 4-5 ft.

#### Summersweet

Fragrant, white flower spikes terminating upright branches, July. (Sweet Pepperbush). Slow grower.

- 2-3 ft. ----- \$ 1.50



BUDDLEIA—Butterfly Bush

## BUSH DOGWOOD

### C. *alba siberica*, 5-6 ft.

#### Carol Dogwood

Planted chiefly for the Winter effect of its blood-red branches. Very effective in planting groups. White flowers in May followed by white fruits in Autumn.

- 18-24 in. ----- \$ 1.25    2-3 ft. ----- \$ 1.50

## COTONEASTERS

### C. *divaricata*, 5-6 ft. Spreading Cotoneaster

Arching branches loaded with bright red fruit; and leaves brilliant in Autumn. One of the finest Shrubs when planted singly or in groups.

- 18-24 in. B&B -- \$ 3.50    2-3 ft. B&B -- \$ 4.00  
3-4 ft. B&B ----- \$ 5.00

## CYDONIAS

### C. *japonica*, 4-5 ft.

#### Flowering Quince

Masses of scarlet flowers hug leafless branches in April. Sometimes called "Fire Bush."

- 18-24 in. ----- \$ 1.35    2-3 ft. ----- \$ 1.50

### C. *japonica Pygmea*

Dwarf growing variety. Orange red.

- 15-18 in. ----- \$1.50

### C. *japonica Hybrid*.

#### Pink Princess

Pink flowering japonica. A fine companion to the Scarlet variety. April and May flowering.

- 18-24 in. ----- \$2.00

**DEUTZIAS**

**DEUTZIA gracilis, 2-3 ft. Slender Deutzia**  
 White flowers in graceful, upright clusters in May. Graceful bushy form. Very dwarf growing.  
 12-15 in. -----\$ 1.40    15-18 in. -----\$ 1.60

**D. lemoinei, 4-5 ft. Lemoine Deutzia**  
 Large, dazzling white flowers in great abundance; May Dwarf habit.  
 15-18 in. -----\$ 1.25    18-24 in. -----\$ 1.50  
 2-3 ft. -----\$ 1.75

**D. s. crenata 6-8 ft. Pride of Rochester**  
 Double, light pink flowers, June.  
 2-3 ft. -----\$ 1.25    3-4 ft. -----\$ 1.50

**Elsholtzia stauntoni, 4 ft. Mint Shrub**  
 Dense one-sided spikes of purplish-pink flowers, open in Sept. and Oct. Very showy.  
 18-24 in. -----\$ 1.50

**EUONYMUS**

**ONE OF OUR MOST SHOWY PLANTS**

**E. alatus, 6-8 ft. Fire Bush**  
 In the Fall its foliage is a brilliant rose. Corky-winged branches; small, red fruits. A very striking plant.  
 2-3 ft. -----\$ 3.00    3-4 ft. -----\$ 4.50  
 4-5 ft. -----\$ 6.00

**E. compacta, 3-4 ft. Df. Winged Euonymus**  
 More compact in habit than alatus. Slow grower.  
 15-18 in. -----\$ 2.00    2-2½ ft. -----\$ 3.50  
 18-24 in. -----\$ 2.50    3-4 ft. -----\$ 5.50

**E. europaeus, 12-14 ft. European Burning Bush**  
 Pink fruits on long stalks, persisting a long time.  
 2-3 ft. -----\$ 1.50    3-4 ft. -----\$ 2.00

**HEDGE PLANTS**

Barberry and Privet can be used to advantage planted in groups or as specimens as well as for Hedges.

**BARBERRY**

**Berberis thunbergi, 4-5 ft. Japanese Barberry**  
 The best "all purpose" plant. In Fall has brilliantly colored foliage and many scarlet berries. Plant 18 inches apart for a nice hedge, or 3 to 4 ft. apart in shrubby plantings.

	10	100
9-12 in., 2-yr. trans. -----	\$ 4.00	\$30.00
12-15 in., 3-yr. trans. -----	5.00	40.00
15-18 in., 3-yr. trans. -----	6.00	50.00
18-24 in., 4-yr. trans. -----	8.00	70.00

**B. t. atropurpurea, 4-5 ft. Red-Leaved Japanese Barberry**  
 Foliage rich bronze-red Spring to Autumn; should have sunny situation.

	10	100
12-15 in., bushy plants -----	\$ 7.00	\$60.00
15-18 in., bushy plants -----	9.00	80.00
18-24 in., bushy plants -----	10.00	90.00

**CALIFORNIA PRIVET**

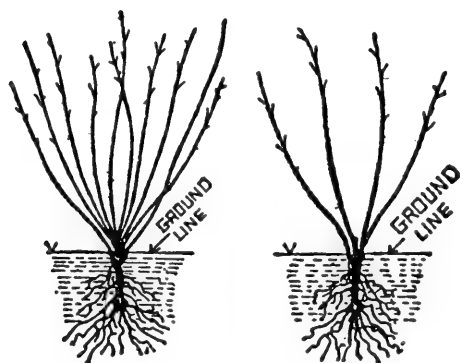
**L. ovalifolium, 12-15 ft. California Privet**  
 The most generally used hedge plant. Space six inches to a foot apart for a dense, full-to-the-ground hedge.

	10	100
12-18 in -----	\$ 2.50	\$20.00
1½-2 ft., 2-year -----	2.80	24.00
2-3 ft., 3-year -----	4.00	35.00

**L. regelianum, 5-6 ft. Regal Privet**  
 Dense shrub with low, horizontal branches; fragrant white flowers in June; attractive black berries. Splendid in foundation planting or hedges.

	10	100
12-18 in. spread -----	\$ 6.00	\$50.00
18-24 in. spread -----	\$ 8.00	70.00
2-3 ft. spread -----	\$10.00	

**How to Plant and Prune Ornamental Shrubs**



Before Pruning

After Pruning

**INFORMATION**

Remove about one-third of top growth of shrub at planting time if Spring planted, or following Spring, if Fall planted, to facilitate establishment of plant. Thereafter, pruning should be done to remove old wood and keep plant to size desired. Cut off damaged or frayed roots just above the point affected. Be careful to have roots exposed to air or sun as little as possible at any time.

The important point in planting is to have the hole large enough to accommodate the roots without crowding, and to get the soil well worked in among the roots. Space the larger growing Shrubs 5-6 ft. apart, medium growers 4 ft., low growers, 3 ft.

Always water abundantly and apply a mulch. A basin-shaped depression should remain around each plant to hold the water, at least the first summer.



BARBERRY HEDGE (See Page 27)

**FORSYTHIAS (Golden Bell)****F. arnold, 2-3 ft. Dwarf Arnold**

Dwarf, low-growing variety. Golden yellow, many blooms.

15-18 in. ----- \$ 1.25    18-24 in. ----- \$ 1.50

**F. intermedia spectabilis, 5-7 ft.**

Showiest of Golden Bells; open late enough to escape injury by frost. Most profuse blooming, large flower.

2-3 ft. ----- \$ 1.35    3-4 ft. ----- \$ 1.50

**F. Ovata, 4 ft. Korean Forsythia**

Dwarf habit, slow growing, compact arching branches. A favorite where a small shrub is desired.

2-3 ft. ----- \$ 1.50

**F. Spring Glory**

This new variety is no doubt the loveliest of all Golden Bells; seen in bloom, it is a sight not soon forgotten. Pale yellow flowers cover the branches in great masses.

15-18 in. ----- \$ 1.00    18-24 in. ----- \$ 1.50

**F. suspensa, 4-6 ft. Weeping Forsythia**

Long, drooping branches; bright yellow flowers, very early. Suitable for covering banks.

2-3 ft. ----- \$ 1.50

**F. s. fortunei, 6-8 ft. Fortune Forsythia**

Finely arching branches, covered with rich yellow flowers.

2-3 ft. ----- \$ 1.35    3-4 ft. ----- \$ 1.75

**F. Linwood Gold Linwood Gold Forsythia**

Erect branches completely smothered under bright yellow flowers from top to bottom. A fine introduction from Ireland. A new introduction.

18-24 in. ----- \$ 1.50    2-3 ft. ----- \$ 2.00

3-4 ft. ----- \$ 2.25

**HIBISCUS syriacus, 10-12 ft.****Shrub Althea or Rose of Sharon**

Hollyhock-like flowers in August-September. White, blue, lavender and red.

2-3 ft. ----- \$ 1.25

**HYDRANGEAS****HYDRANGEA arborescens grand., 4-5 ft.****Snowhill**

Upright branched shrub with pure white flowers like big snow-balls, June-September.

2-3 ft. ----- \$ 1.35    3-4 ft. ----- \$ 1.50

**H. opuloides nikko, 2-3 ft.****French Hydrangea**

Blue or pink flowers in immense clusters in August. For blue flowers plant in acid soil.

3-year potted plants ----- \$ 2.25

**H. paniculata grand., 8-10 ft.****Peegee Hydrangea**

Immense cone-shaped heads of white flowers turning pink and bronze, September-October.

18-24 in. ----- \$ 1.15    2-3 ft. ----- \$ 1.50

**H. quercifolia, 3-4 ft. Oakleaf Hydrangea**

Leaves oak-like beautifully colored in the Fall. Flowers pinkish-white, turning purplish, semi-shade preferred.

1½-2 ft. ----- \$ 2.25

**Hypericum kalmianum, 3 ft. Kalm Hypericum**

A low hardy shrub, has narrow leaves and yellow flower clusters, July and Aug.

18-24 in. ----- \$ 1.25

**H. Sungold, 3 ft.**

Improved variety. Especially suitable for foundation planting. Blooms July and August. Yellow flowers in clusters.

18-24 in. ----- \$ 1.50

**JASMINUM nudiflorum, 2-3 ft.****Winter Jasmine**

Golden yellow flowers before the leaves. Very first Shrub to bloom in the Spring. Spreading habit. Ideal for walls or banks.

18-24 in. ----- \$ 1.25

**KERRIA japonica (Corchorus), 4-5 ft.****Kerria**

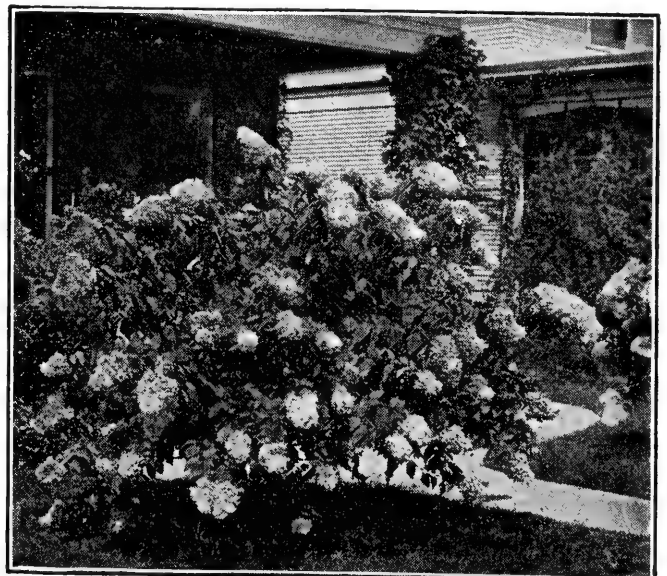
June to September profusion of rich-yellow flowers with numerous stamens.

18-24 in. ----- \$ 1.50

**KOLKWITZIA amabilis, 5-7 ft. Beauty Bush**

Fountain-like mass of pink bloom in May. Thrives best in full sunlight.

2-3 ft. ----- \$ 1.50    3-4 ft. ----- \$ 2.00



PEEGEE HYDRANGEA

**L. Lagerstroemia Indica, 8-10 ft.****Crape-myrtle**

Is one of the most beautiful shrubs. Attractive, rose-pink flowers, with fringed petals in panicles and blooms in the hot summer months. Must have winter protection, while young.

4 yr. potted plants, 24-30 in. -----\$ 5.00

**LONICERA (Honeysuckle)****L. fragrantissima, 6-8 ft.****Winter Honeysuckle**

Small creamy-white, very fragrant flowers in March; red fruits. Semi-evergreen.

**L. morrowi, 6-8 ft. Morrow Honeysuckle**

White flowers May and June; translucent, blood-red berries, July-August.

**L. tatarica rosea, 8-10 ft.****Pink Tatarian Honeysuckle**

Pink flowers, May-June; attractive red fruit.

**L. zabelli Salmon Red Honeysuckle**

Any of the above:

2-3 ft. -----\$ 1.35    3-4 ft. -----\$ 1.95

**PHILADELPHUS (Mockoranges)****P. lemoinei, 6-8 ft.****Lemoine Mock Orange**

Flowers smaller, fragrant, in great profusion. Dwarf, graceful habit. Beautifully symmetrical plant.

2-3 ft. -----\$ 1.50

**P. Minnesota.****Snowflake**

New introduction. Very large double white flowers, no doubt the best of the Mock Oranges.

2-3 ft. -----\$ 1.75

**P. virginialis, 6-8 ft. Virginal Mock Orange**

Large, sweet, double, pure white flowers in May and June and intervals throughout Summer.

18-24 in. ---\$1.25    2-3 ft. ---\$1.50    3-4 ft. ---\$2.00

**PRUNUS (amygdalis) glandulosa alba, fl. pl., 5-7 ft. Double White Flowering Almond**

White, fully double flowers crowd the bare branches in early Spring; very picturesque. Dwarf habit.

18-24 in. -----\$ 1.50

**P. rosea, fl. pl., 5-7 ft.****Double Pink Flowering Almond**

Very attractive pink form of preceding.

18-24 in. -----\$ 1.50

**RHODOTYPOS kerrioides, 4-5 ft. Jetbead**

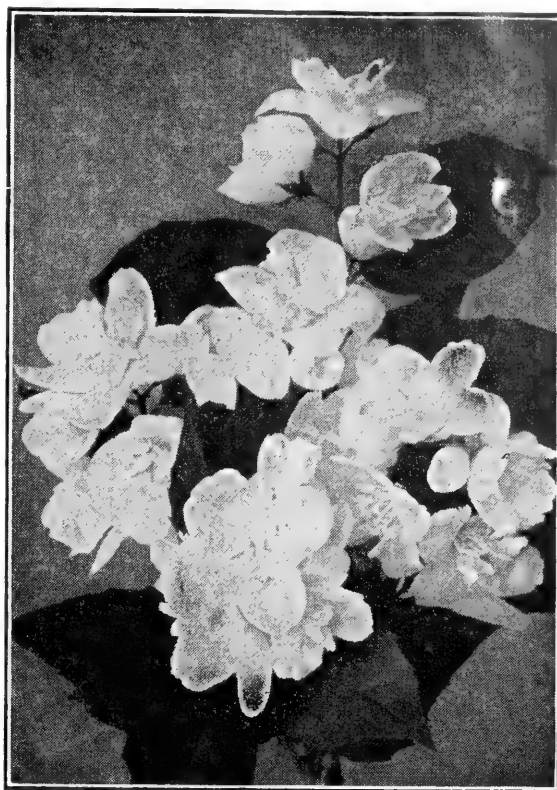
White flowers in May followed by conspicuous, black bead-like fruits. Will grow satisfactorily in shade or sunny situations, or in poor soil.

2-3 ft. -----\$ 1.35

**ROSA hugonis, 5-6 ft.****Hugonis Rose (Golden Rose of China)**

Long garlands of dainty, yellow flowers in May.

2-2½ ft. -----\$ 1.50



VIRGINAL MOCK ORANGE.

**R. rugosa, 4-5 ft.****Japanese Rose**

Large, red flowers, followed by handsome, scarlet-crimson fruits.

18-24 in. -----\$ 1.50

**SPIREAS****SPIREA arguta, 4-5 ft.****Garland Spirea**

Profusion of white flowers on slender, drooping branches; feathery foliage. Dwarf growing.

2-3 ft. -----\$ 1.25    3-4 ft. -----\$ 1.50

**Spirea Billiardi, 4-5 ft.****Billiard Spirea**

Bright, pink, fluffy flower spike. July-October. Fine for cutting.

2-3 ft. -----\$ 1.25

**S. bumalda anthony waterer, 2-3 ft.****Anthony Waterer Spirea**

Rosy-crimson flowers in flat-topped, terminal clusters, June to frost. Good plant for flowering hedge. Very dwarf.

12-15 in. -----\$ 1.10    15-18 in. -----\$ 1.25

18-24 in. -----\$ 1.50

**S. prunifolia, fl. pl., 6-8 ft. Bridal Wreath**

White, fully double, small button-like flowers, on slender, upright branches, April-May.

2-3 ft. -----\$ 1.35    3-4 ft. -----\$ 1.50

**S. thunbergi**

Slender arching branches, pure white flowers in April, feathery foliage. Dwarf growing.

2-3 ft. -----\$ 1.25    3-4 ft. -----\$ 1.50

**S. van houttei, 6-8 ft. Van Houtte Spirea**

Graceful, arching branches wreathed in May-June with a profusion of pure white flowers.

18-24 in. -----\$ 0.75    2-3 ft. -----\$ 1.25

3-4 ft. -----\$ 1.40



**PRUNUS AMYGDALIS**  
FLOWERING ALMOND  
See description on page 29

**STEPHANANDRA flexuosa, 5-6 ft.**

**Cutleaf Stephanandra**  
Graceful, spreading shrub; small, white flowers in clusters, June-July; dainty leaves, brilliant red in Autumn. Thrives in semi-shade.

2-3 ft. ----- \$ 1.35

**SYMPHORICARPOS chenaulti, 5-6 ft.**

**Chenault Coralberry**  
Bunches of coral-red fruits remaining until mid-winter. An improved type of Coralberry.

2-3 ft. ----- \$ 1.00

**S. racemosus, 5-6 ft.**

**Snowberry**  
Showy, waxy, white berries weigh down the willow branches in Autumn.

2-3 ft. ----- \$ 1.25

**Symplocos paniculata**

Attractive foliage, white fragrant flower in May. Beautiful turquoise-blue fruit in the Fall.

2-3 ft., B&B ----- \$ 3.00

**SYRINGA (Lilacs)**

**S. chinensis (rothomagensis), 8-9 ft.**

**Chinese Lilac**  
Fragrant, reddish-purple flowers in large, open heads in May. Free flowering.

3-4 ft. ----- \$ 2.25

**S. persica, 5-8 ft.**

**Persian Lilac**  
Slender, arching branches, bearing fragrant pale-lilac flowers in loose, broad panicles, appearing after the Common Lilac.

18-24 in ----- \$ 1.25    2-3 ft. ----- \$ 1.50

3-4 ft. ----- \$ 2.25

**S. vulgaris, 10-12 ft.**

**Common Lilac**  
Fragrant, purplish flowers in May in large, double clusters.

2-3 ft. ----- \$ 2.00    3-4 ft. ----- \$ 2.50

**S. vulgaris alba**                      **White Common Lilac**  
2-3 ft. ----- \$ 2.00    3-4 ft. ----- \$ 2.50

**FRENCH LILACS**

The French Lilacs are recognized as the finest of the Lilac family. Fragrant. Perfection in size of bloom, color and form.

**Belle de Nancy**, double satiny-pink.

**Charles Joly**, semi-double, red mauve.

**Charles the Tenth**. Single, rich purple.

**Marie Legrave**, single, white. Very choice variety.

**Michael Buchner**. Double Pinkish lilac.

**Mme. Lemoine**. Double, white

**President Lincoln**, clear blue.

Any of above varieties:

2-3 ft. ----- \$ 2.50    3-4 ft. ----- \$ 3.00

If balled and burlapped add 50c additional.

**Tamarix africana, 12-15 ft.**

**African Tamarix**

Very graceful, tall, upright shrub with dainty, feathery, unusually bright green foliage. All the branches become covered with clouds of small pink flowers in spring.

3-4 ft. ----- \$ 2.00

**VIBURNUMS**

**V. burkwoodi, 4-5 ft.**

**Burkwood**

Faster grower than Carlesi, and semi-evergreen, fragrant flowers.

18-24 in. B&B -- \$ 4.50    2½-3 ft. B&B -- \$ 5.00

3-4 ft. B&B ----- \$ 5.50

**V. carlesi, 3-4 ft.**

**Fragrant Viburnum**

Lovely pink, fragrant flowers in dense clusters, early April; blue-black berries.

18-24 in. B&B ----- \$ 5.75

**V. dilatatum, 8-10 ft.**

**Linden Viburnum**

Attractive, spreading shrub, creamy-white flowers; small red fruits in September to December.

18-24 in. ----- \$ 1.50    3-4 ft. ----- \$ 3.00

2-3 ft. ----- \$ 2.00    4-5 ft. ----- \$ 4.00

**V. lantana, 15 ft.**

**Wayfaring-tree**

Showy white flowers, May-June. Red berries in fall changing to black.

3-4 ft. ----- \$ 2.50

**V. opulus**

**European Cranberry**

Showy white flower heads May-June; scarlet berries, Fall. (High Bush Cranberry).

2-3 ft. ----- \$ 1.35    3-4 ft. ----- \$ 2.50

**V. opulus nana, 2 ft.**

**Dwarf Cranberrybush**

Dwarf, heavy shrub often used for hedges, rarely flowers. Tolerates light shade.

8-12 in. ----- .75 ea. 10 for \$6.50

**V. setigerum, 10 ft.**

**Tea Viburnum**

White flowers in early summer, has large deep green leaves, covered with clusters of brilliant red berries late summer and autumn.

2-3 ft. ----- \$ 2.00    3-4 ft. ----- \$ 3.00

4-5 ft. ----- \$ 4.00

**V. tomentosum, 6-8 ft.**

**Doublefile Viburnum**

Profuse, pure white flowers in large flat clusters, June. Red fruits changing to black in fall.

2-3 ft. ----- \$ 2.00    3-4 ft. ----- \$ 2.50

4-5 ft. specimen ----- \$ 3.50





THE WEIGELA

**V. wrighti, 8 ft. Wright Viburnum**  
 Large white flowers in the Spring. Large red berries in fall.  
 18-24 in. -----\$ 1.50    3-4 ft. -----\$ 3.00  
 2-3 ft. -----\$ 2.00

**VITEX macrophyllus, 4-5 ft. Chaste-tree**  
 Very graceful, attractive plant; pretty lavender blue flower spikes 6 to 10 in. long, July to frost.  
 2-3 ft. -----\$ 1.60

**WEIGELAS**

**W. candida, 7-8 ft. White Weigela**  
 Best white-flowered Weigela, with many big, attractive creamy floral trumpets in late spring.  
 2-3 ft. -----\$ 1.50    3-4 ft. -----\$ 2.00

**W. bristol ruby, 6 ft. Bristol Ruby Weigela**  
 Deep crimson flowers in great abundance in May and June.  
 18-24 in. -----\$ 2.00    2-3 ft. -----\$ 2.50  
 3-4 ft. -----\$ 3.00

**W. floribunda, 6-8 ft. Crimson Weigela**  
 Tubular dark crimson, fragrant flowers, June-August.  
 2-3 ft. -----\$ 1.50    3-4 ft. -----\$ 1.65

**V. t. plicatum, 6-8 ft. Japanese Snowball**  
 Large, round heads, snowy white flowers, in June; dark green, crumpled foliage.  
 18-24 in. -----\$ 1.60    3-4 ft. -----\$ 2.50  
 2 - 3 ft. -----\$ 2.00    4-5 ft. -----\$ 3.50

**W. Rosea**  
 Rich rose-colored flowers, probably the best pink Weigela.  
 2-3 ft. -----\$ 1.50    3-4 ft. -----\$ 1.65

*Selection of Vines for Any Place Made Easy*

**VARIETIES, SIZES AND PRICES**

10% Discount when three or more of one kind are ordered.

Shipping orders packed free, Express collect.

Each	Walls and Surfaces	Porches and Pergolas	Banks and Slopes	Flowering	Autumn Color	Evergreen
<i>Ampelopsis tricuspidata (veitchii)</i> —Boston Ivy, 2 yr. potted plants -----	\$1.00	*			*	
<i>Bignonia radicans</i> —Trumpet Creeper, strong 2 yr. potted plants -----	.75	*	*	*	*	
<i>Clematis paniculata</i> —Sweet Autumn Clematis, potted plants, 2 yr. old -----	1.35			*	*	
<i>Clematis henryi</i> —Henry Clematis (white), 2 yr. potted plants -----	2.00			*	*	
<i>Clematis hybrid andre</i> —Madame Andre Clematis (red), 2 yr. potted plants -----	2.00			*	*	
<i>Clematis jackmani</i> —Jackman Clematis (purple), 2 yr. potted plants -----	2.00			*	*	
<i>Euonymus radicans</i> —Wintercreeper, heavy, 2 yr. plants -----	1.00	*			*	*
<i>Euonymus radicans var. vegetus</i> —Big Leaf Wintercreeper, 2 yr. plants -----	1.50	*			*	*
<i>Hedera helix</i> —English Ivy, 2½ in. pots -----	.25	*	*		*	*
<i>Hedera helix cuspidata minor</i> —Small-Leaf English Ivy, 2½ in. pots -----	.25	*	*		*	*
<i>Lonicera japonica halliana</i> —Hall Japanese Climbing Honeysuckle, out of 3 in. pots -----	.35		*		*	*
<i>Lycium chinensis</i> —Chinese Matrimony Vine, 2 yr. plants -----	1.00		*		*	*
<i>Wisteria sinensis</i> —Chinese Wisteria (blue), 2 yr. field grown (grafted plants) -----	2.00		*		*	*
<i>Wisteria sinensis alba</i> —White Chinese Wisteria, 2 yr. field grown (grafted plants) -----	2.00		*		*	*

**Evergreen Ground Cover Plants For Difficult Shady Places**

**PACHYSANDRA (Spurge)**

Under trees Pachysandra is the real answer to the problem of covering the bare ground with greenery. Another advantage is the protection to the roots of trees afforded by the Pachysandra. The glossy foliage is very attractive. Use 2 plants to a sq. ft. of the area to be covered.

Per 10    Per 100  
 1 yr. plants ...\$ 1.50    \$10.00  
 1000 rate \$90.00  
 Potted plants.. 2.00    15.00  
 1000 rate \$140.00

**ENGLISH IVY**

The English Ivy is particularly effective used on banks, to edge walks and under trees. An advantage in using Barr's English Ivy is that it goes further in coverage, each pot containing two plants—a twofold advantage. Plant 10 to 12 inches apart and you will soon have a carpet of green.

Per 10    Per 100  
 2½ in. pot  
 size ..... \$ 2.00    \$18.00  
 (Large or Small-leaved)

**PERIWINKLE (Myrtle)**

Not only is the Hardy Periwinkle a good ground cover under trees and on hillsides, but its pretty blue flowers also make an appeal. The glossy, evergreen foliage remains beautiful the year round. When planting do not place the crown of the plant below the surface of the soil. Use 2 plants to 1 sq. ft. of area.

Per 10    Per 100  
 Strong, field-grown plants \$ 1.50    \$ 11.00  
 Potted plants .. 2.00    15.00

# BARR'S FRUIT TREES . . . Are Sturdy Heavy Yielding

The trees listed here are the best in their respective varieties. They are the largest sizes that can be planted to best advantage, are straight trunked, true to name. By reason of their being northern grown they have unusual vigor, will transplant successfully, make good growth, and give an early and abundant yield. Plant cherry tree tap-root straight down.

Heavy, No. 1 grade selected trees; note large caliper (trunk diameter) of trees supplied.

## STANDARD APPLE

- ✓ Baldwin. Large; bright red; Winter.
  - ✓ Grimes' Golden Pippin. Medium. Winter
  - ✓ Rambo. Large Yellow. Autumn.
  - ✓ Red Delicious. Large Red Striped. Winter.
  - ✓ Rome Beauty. Large, Red Shaded. Winter.
  - ✓ Smokehouse. Medium, Red Striped. Winter.
  - ✓ Stayman's Winesap. Red. Winter.
  - ✓ Wealthy. Red. Autumn.
  - ✓ Yellow Delicious. Large. Yellow. Winter.
  - ✓ Yellow Transparent. Yellow. Summer.
  - ✓ York Imperial. Red & Yellow. Winter.
- 2 yr. 11/16 in. cal. \$1.60 ea.

## CRAB-APPLE

- ✓ Transcendent. Yellow. September. 2 yr. \$2.25 ea.

## APRICOT

- ✓ Moorpark. Large. August. 2 yr. 4-5 ft. \$2.10.

## SOUR CHERRY

- ✓ Early Richmond. Red. Mid-June.
  - ✓ English Morello. Red. Late July.
  - ✓ Montmorency. Red. June.
- 2 yr., 4-5 ft., 11/16 in. cal., \$2.25 ea.

## SWEET CHERRY

- ✓ Black Tartarian. Purple. June.
  - ✓ Governor Wood. Red. June.
  - ✓ Napoleon Bigarreau. Yellow, Red. July.
  - ✓ Schmidt's Bigarreau. Red. July.
  - ✓ Windsor. (Oxheart). Dark Red. July.
- 2 yr., 5-6 ft., 11/16 in. cal., \$2.75. ea.

## PEACH

- ✓ Belle of Georgia. White. Early September.
  - ✓ Champion. White. Late September.
  - ✓ Elberta. Red. Middle of August.
  - ✓ Golden Jubilee. Yellow. Middle of August.
  - ✓ Hale Haven. Yellow. Middle of August.
- 1 yr., 5-6 ft., 11/16 in. cal., \$2.20 ea.

## PEAR

- ✓ Bartlett. Yellow. Autumn.
  - ✓ Duchess d'Agnouleme. Yellow. Autumn.
  - ✓ Kieffer. Yellow. Winter.
  - ✓ Seckel. Yellowish Russet. Autumn.
- 2 yr., 5-6 ft., \$2.25 ea.

## PLUM

- (European Varieties)
- ✓ Abundance. Yellow. First of August.
  - ✓ Burbank. Cherry-red. Last of August.
  - ✓ German Prune. Purple. September.
- 2 yr., 5-6 ft., \$2.50 ea.

## QUINCE

- ✓ Orange. 2 yr., 5-6 ft. \$2.10 ea., 3 for \$6.00.

## BLUEBERRY PLANTS

Your choice of Cabot (early); Rancocas (mid-season); Rubel (late). Use two or more varieties to cross-pollenize for best results.

If your soil is sweet, mix peat moss or rotted vegetable matter in the soil and around the plants, also rotted manure and broadleaf fertilizer to make the soil acid.

- ✓ Cabot, Rancocas and Rubel.
- 2 yr., 12-18 in., \$1.35 ea.; \$10.00 per 10.  
3 yr., 18-24 in., \$1.90 ea.; \$14.00 per 10.

## ASPARAGUS

- ✓ Mary Washington. 2 yr. Select No. 1 roots. \$4.00 for 50; \$6.00 per 100; \$12.00 per 250; \$30.00 per 1,000.

## GRAPE VINES

### Black

- ✓ Concord. The well-known black Grape.

### Red and Purple

- ✓ Catawba. Unusually sweet and aromatic flesh.

### White

- ✓ Niagara. Large, round berries; best white.

Selected, strong 2 yr. Grape Vines, .65 ea. Any 3 for \$1.70.

## RASPBERRY

- ✓ Cumberland. A well-known black-cap. Fruit large.
  - ✓ Latham. Large, round, brilliant red; heavy yielding. Mosaic free and hardy.
- Strong plants, \$2.55 per 10; 25 for \$4.90.

## RHUBARB

- ✓ R. Canada Red, 2 yr. roots, \$1.00 ea.; 3 for \$2.75.

## STRAWBERRIES

The Strawberry will grow in any good garden soil. Plant 1 foot apart in the row, the rows 3 to 4 feet apart.

- ✓ Big Joe (Perfect). Vigorous grower and very productive. Berries large, conical shape, rich red, excellent flavor. Best mid-season variety.
  - ✓ Catskill (Perfect). Vigorous grower, very productive, large. Excellent flavor. Mid-season.
  - ✓ Chesapeake. (Perfect). Large, firm berries of delicious flavor. Glossy, rich color. Best late variety.
  - ✓ Dorset (Perfect) New introduction, heavy yielding qualities, delicious flavor. Early.
  - ✓ Fairfax (Perfect). Fruit bright red, glossy and attractive. Standard, medium early.
  - ✓ Premier (Perfect). Glossy, rich red color extending clear through. Deliciously flavored. Immensely productive. Best very early.
- Strong, layer plants. 25 for \$1.35; 50 for \$2.25; \$3.60 per 100. Your selection.

## EVERBEARING STRAWBERRIES

- ✓ Mastodon. Large fruiting and most prolific, bearing continuously June to frost; good flavor. 25 for \$2.60; 50 for \$4.40; \$7.00 per 100.



DISH OF CATSKILL STRAWBERRIES

# INSECTICIDES and FUNGICIDES

**Aramite.** A 15% wettable powder for effective control of red spider and all other mites. Non-poisonous to humans and animals. 8 oz. can \$.98 4 lb. bag, \$3.69.

**Arsenate of Lead.** (Powdered) To combat leaf-eating insects. Use 1½ to 2 lbs. to 50 gals. of water. 1 lb., 79c; 3 lbs., \$2.12.

**Black Leaf 40.** (Nicotine Sulphate). (Guardian of the garden). Kills sucking and chewing insects. Dogs detour from evergreens sprayed with Black Leaf 40. Spray as directed every 2 weeks 1 oz., 49c; 5 oz., \$1.39.

**Bor-Dox.** For mildew, blight, black rot and other fungus diseases of fruits and plants. 1 lb., 69c; 4 lbs., \$1.89.

**Borerkil** is a scientifically prepared paste that kills boring insects when injected into their burrows. Safe, convenient and simple to use. Packed in handy tubes with injectors included Garden Size, 2 oz., \$1.00.

**C. P. O.** Liquid insecticidal soap spreader that increases the efficiency of contact spray solutions. Odorless; non-poisonous; does not discolor foliage. 1 qt., \$1.00; 1 gal., \$3.00.

**Ferbam (Fermate).** Fluffy black fungicide used to prevent rot, mildew, damping-off, and leaf spots. Apply to plant foliage before infection occurs. 8 oz. can, \$1.00.

**Hort Spray (50% DDT).** A water-dispersable wettable powder for vegetable, animal, and building applications. Controls many insects and is compatible with most insecticides and fungicides. 1 lb. can, 85c.

When small quantities of fertilizers or insecticides are wanted by parcel post, please add postage as follows: 26c for 5 lbs., or less. Larger quantities will be sent by express or freight, collect.

**Agri-nite.** 100% natural organic plant food—will not burn grass when applied during late Spring or Summer months. Use at rate of 20 to 30# per 1000 sq. ft. 25 lb., \$2.00; 50 lbs., \$3.55; 80 lbs., \$5.35.

**African Violet Soil.** A special soil with soil conditioner added. 1½ lbs., 25c; 4 lbs., 50c.

**Agrico for Lawns, Shrubs and Trees.** Formula that makes grass develop stronger and deep rooted. Gives good color and vigor to the lawn. Apply 1 lb. to 40 square feet and water after applying. 5 lbs., 60c; 10 lbs., \$1.10; 25 lbs., \$1.75; 50 lbs., \$2.75.

**Agrico for Gardens and Flowers.** Formula especially prepared for Vegetables and flowers. Apply 1 lb. to 40 square feet. 5 lbs., 60c; 10 lbs., \$1.10; 25 lbs., \$1.60; 50 lbs., \$2.55.

**Agrico for Azaleas.** Both acidifies the soil and provides plant food. Especially needed by Azaleas, Rhododendrons and other broad leafed evergreens. Broadcast ½ lb. to one square yard twice a year and water after applying. 5 lbs., 65c; 10 lbs., \$1.25; 25 lbs., \$2.00.

**Aluminum Sulphate.** Useful in creating acid soil conditions. Broadcast ½ to 1 lb. to each square yard of surface. 5 lbs., .50c; 10 lbs., .85c; 25 lbs., \$2.12.

**Bone Meal.** Steamed. All purpose balanced fertilizer, 5 lbs., 85c; 10 lbs., \$1.59; 25 lbs., \$2.72; 100 lbs., \$9.65.

**Bulb Food.** A well-balanced food for Spring and Fall bulbs. 5 lbs., 85c; 10 lbs., \$1.45.

**Natural cow manure,** thoroughly dehydrated and pulverized. Free of weed seeds. One pound is sufficient for 25 sq. ft. of area. 2 lbs., 25c; 10 lbs., \$1.00; 25 lbs., \$1.65; 50 lbs., \$3.00.

**Leaf Mold.** Nature's plant food. Mix with soil in which Rhododendrons and Azaleas are to be planted. 2 parts Leaf Mold to 1 part soil. 2 bushel bag, \$2.00; ½ ton, \$15.00; 1 ton, \$25.00.

**Lime Stone, Pulverized.** For lawn and field use where the ground has become sour. Four pounds sufficient for 25 sq. ft. of surface; 80 lbs. bag, \$1.10.

**Peat Moss.** (Ground) Applied as mulch, conserves moisture, keeps down weeds, melloes and acidifies the soil and beautifies at same time. Water well before and immediately after applying as

**Isotox.** A Garden Spray that controls foliage, soil, and Lawn insects. 8 oz. bottle, \$1.85.

**Klor Spray (Chlordane 40%)** An effective insecticide for control of a wide variety of insect. Especially good to control turf and many orchid insects. 1 lb. can, \$1.45.

**Malathion.** A new Garden Spray which has proven to be very effective against practically all insects. Use according to directions. 4 oz bottle, \$1.00.

**Marvel Spray.** Sure remedy for mealy bugs. Kills by penetrating the waxy coat of the insect. Stimulates plant growth; does not burn or stain. 4 oz. can, \$1.00.

**Molgen.** An "ogen" product in semi-powder form. Eliminates moles from lawns, flower and bulb beds, etc. Will not harm soil or grass. 8 oz. can, 59c.

**Sunoco.** Most effective spray for scale insects. 1 gal. makes 30 to 75 gal. spray. 1 gal., \$1.45.

**T A T Ant Trap.** Recommended for the home due to exclusive safety feature. Destroys both sweet and grease eating ants. Worker ants enter traps and carry poison back to colony and soon the queen and every member is destroyed in their nests which usually are outside the house or in the foundations. 25c ea., 3 for 69c.

a mulch. 1 bale covers 125 sq. ft. to depth of 2 inches. 1 peck, 59c; 3 peck, 95c; 2 bu. bag, \$2.00. Half Bales, \$3.00; Large Bales, \$5.00.

**Cash and Carry.** Half Bales, \$2.75; Large Bales, \$4.75.

**Michigan Peat.** Organic soil conditioner or for a garden top dressing. 1 peck, 98c; 25 lbs., \$1.69; 50 lbs., \$2.49; 100 lbs., \$4.49.

**Rhododendron Food.** Both acidifies the soil and provides plant food especially needed by Rhododendrons, Azaleas and other broad-leaved evergreens. Broadcast 1 lb. to each square yard two or three times a year. 5 lbs., 85c; 10 lbs., \$1.45.

**Soil, Potting.** Mixture of soil, sand and fertilizer. Ideal for potting purposes, or any place where especially good soil is needed. 1 bu. \$1.25; 2 bu. \$2.25; 3 bu. \$3.25; 5 bu. \$5.00.

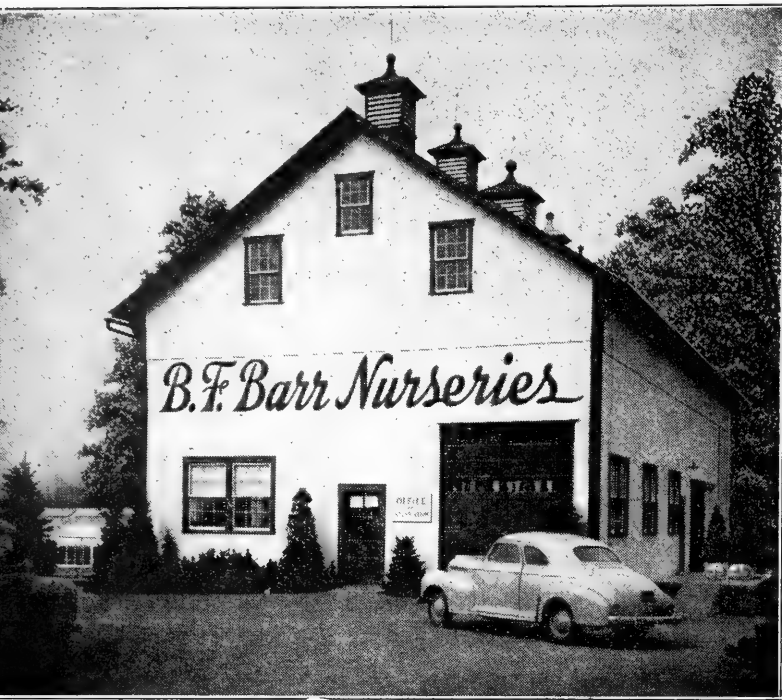
**Tan Bark** A fine mulch material that does not blow away. Conserves moisture, keeps weeds down, melloes and acidifies the soil. Water well before and immediately after applying as a mulch. Apply 2 inches deep as a mulch. 2 bu. bag, \$2.75; ½ ton, \$21.50; 1 ton, \$39.00.

**Terogen.** Autumn and Winter Soil Treatment for Roses. Gives Rose plants a quick start in Spring and is especially good for roses which suffered from disease and insect attacks during the summer. 2 lbs., \$1.25; 5 lbs., \$2.75; 10 lbs., \$4.75.

**Tobacco Stems, Cut.** A combined fertilizer, mulch and insecticide for lawns and shrubbery, trees and evergreens. Unlike stable manure does not introduce weed seeds. 100 lbs. will cover 500 sq. ft. thickly. 100 lbs., \$2.00; 200 lbs., \$3.00; 500 lbs., \$6.00; 1 ton, \$20.00.

**Tree Food (Barr's).** Trees will make quick response to this special food and its action will also be long lasting. Especially valuable for Oak trees where leaves show tendency to turn yellow. Use 4 lbs. to each 1 in. caliper early spring, and again in July. Do not use as top dressing but insert in holes in ground as far as branches extend above. 10 lbs., \$1.80; 50 lbs., \$4.00; 100 lbs., \$7.00.

**Vigoro.** Special prepared plant food. Vigoro supplies all 11 of the vital food elements all growing plants need from the soil. It is clean, odorless, sanitary and easy to apply. Use 1 lb. to 20-25 sq. ft. area, 5 lb., 55c; 10 lb., 95c; 25 lb., \$1.70; 50 lb., \$2.55.



Established 1893

**B. F. BARR & SON** Phone EX 2-5415  
**Main Office and Nurseries**  
 1725 Marietta Ave., P. O. Box 463  
 Lancaster, Pa.

Offices, salesroom, greenhouses and shipping department practically under one roof.

Business hours, open every week day except holidays from 8:00 a. m. to 5:00 p. m. Open during the months of April and May until 8 p. m. Closed Sundays.

Visitors welcome daily.

### CONTENTS

Broadleaf Evergreens	24, 25
Chrysanthemums, Hardy Garden	8, 9
Evergreens	14, 15, 16, 17, 18, 19, 20
Fertilizers	33
Flowering Shrubs	26, 27, 28, 29, 30, 31
Fruit Trees and Small Fruits	32
Ground Covers	31
Hedge Plants	27
Insecticides & Fungicides	33
Landscape Service	13
Lawn Grass Seed	13
Perennials, Hardy	10, 11, 12
Rose Plants	3, 4, 5, 6, 7
Shade & Flowering Trees	21, 22, 23
Terms and Delivery	34
Vines	31

Many Garden Accessories, not catalogued are in stock to aid you in your garden needs:

Sprayers	Garden Hose	Bird Baths
Dusters	Garden Gloves	Jardinieres
Water Soakers	Garden Tools	Trellises
	Flower Boxes	

Annual plants: Geraniums, Petunias, Zinnias, Marigolds, Cockscomb, Asters, etc. Mandeville & King dependable Flower Seeds.

In line with present trends, we are constantly improving our facilities, so that visitors can pick up their gardening needs and take them home with a minimum loss of time. Dependable service awaits you.

### TERMS AND DELIVERIES

#### It's Easy to Order by Mail

Customers are invited to read this page before ordering.

A Check, Post Office or Express Money Order may accompany your order. We are glad to open charge accounts on receipt of the usual trade references.

Catalogue prices net at our nurseries and include free delivery within 2 miles from Lancaster.

#### SHIPPING CHARGES

All Dormant Roses, Perennials and Chrysanthemums for \$5 or more sent prepaid; under \$5 please add 40c for packing and postage.

Shrubby and Trees under 4 feet, dug without a ball of earth, catalog prices include free, expert, packing—Shipping charges not prepaid.

Evergreens and plants dug with a ball of earth, include trees, over 4 feet, packing additional. Please add 15% to list price to help defray the cost of crates and packing material. Unless plants and other materials are marked postpaid, they are sent by Railway Freight or Express, delivery charges collect, or, by truck at cost, or 26c a mile round trip mileage.

Balled plants (B&B) may be shipped safely by freight, while plants not balled, express is recommended.

If we are unable to make full shipment of your order, and you do not allow substitution, we will make prompt refund of your over-payment.

The right is reserved to advance prices without notice depending on market or other conditions beyond our control.

Safe arrival guaranteed. Please report any dissatisfaction immediately.

Responsibility. While we exercise the greatest care in filling orders, we cannot give any warranty, expressed or implied. We will replace such material as proved not true to name, but it is agreed at no time will we be responsible for more than the original purchase price.

Replacement. All stock accepted as satisfactory, properly planted and cared for, if failing to grow, dies from reasons beyond our or the customer's control. Such losses (except the delivery and planting) occurring the first growing season are shared fairly on a 50-50 basis. Hence, we agree to replace once at one-half the original purchase price.







**GOLDEN SCEPTER**  
Plant Pat. No. 910

\$2.00 each; 3 or more, \$1.75 each



**TIFFANY**

Plant Pat. No. 1304  
\$2.50 each;  
3 or more, \$2.20 each



©

**BLANCHE MALLERIN**  
Plant Pat. No. 594

\$2.25 each; 3 or more, \$2.00 each

**5**  
*Fine* **ROSES**  
for  
**YOUR GARDEN**

Roses described on  
pages 3, 4, 5, 6, 7

**ONE EACH  
OF THESE**

**5**  
*Fine Roses*

**\$9.90**

Postpaid



**FASHION**  
(*Floribunda*)

Plant Pat. No. 789

\$2.00 each; 3 or more, \$1.75 each



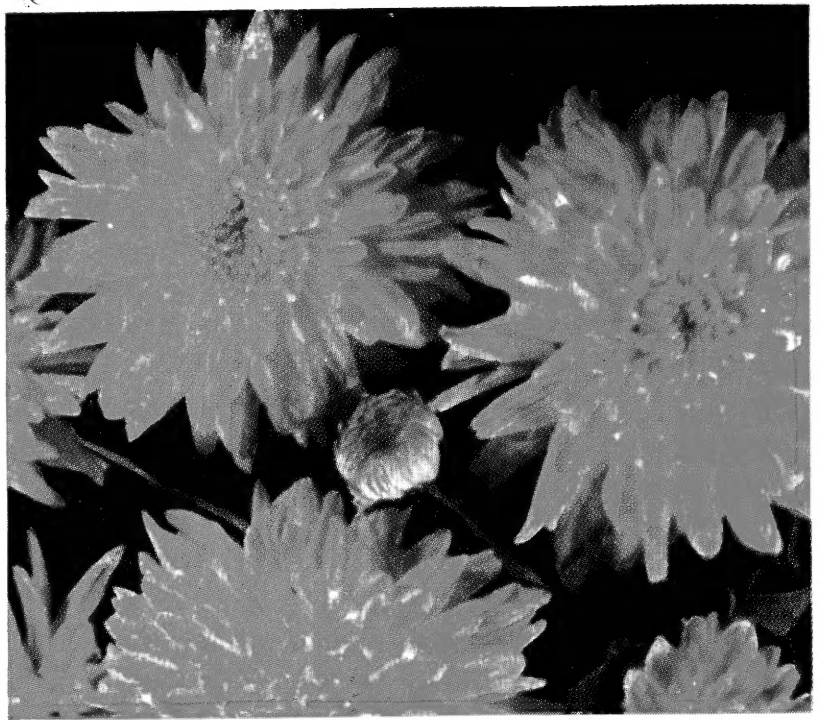
**CHRYSLER IMPERIAL**

Plant Pat. No. 1167

\$2.50 each; 3 or more, \$2.20 each



**CHRYSANTHEMUM, Betty.** See page 8  
60c each; 3 for \$1.60



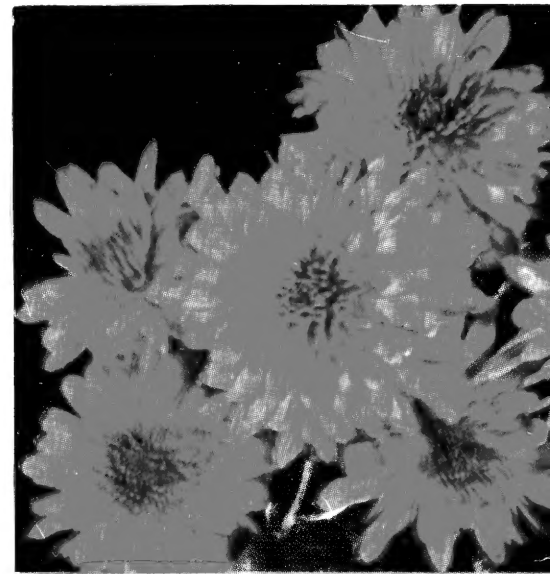
**CHRYSANTHEMUM, Charles Nye.** See page 8  
60c each; 3 for \$1.60



**CHRYSANTHEMUM, Jubilee**  
See page 9  
60c each; 3 for \$1.60



**CHRYSANTHEMUM, Red Gold**  
See page 9  
60c each; 3 for \$1.60



**CHRYSANTHEMUM, Autumn Song**  
See page 8  
60c each; 3 for \$1.60

## **B. F. BARR & SON** Nurseries

**1725 Marietta Ave., Route 340, LANCASTER, PA.**

**FORSYTHIA, Lynwood Gold.** See page 28  
18 to 24 in., \$1.50 2 to 3 ft., \$2.00

**PYRACANTHA Coccinea Lalandi.** See page 25  
15 to 18 in., \$3.00 18 to 24 in., \$4.50

